



## **SCHOOL RESULTS ANALYSIS**

### **at Key Stage 4 (GCSEs etc)**

**for**

**Ardingly College  
Haywards Heath**

**from The Good Schools Guide  
[www.goodschoolsguide.co.uk](http://www.goodschoolsguide.co.uk)**

For detailed advice on using this report, please refer to [www.goodschoolsguide.co.uk](http://www.goodschoolsguide.co.uk)

Use this report to prompt questions more than to reach conclusions. The more students a school has, the more reliable these charts will be. School character and quality are generally slow to change, so previous years' results tell you a good deal about what to expect in the future, but keep your eyes open for changes on the ground. We have done our best to ensure that these analyses are accurate and fair. But we are imperfect, and we have had to make decisions on how best to present data. If you feel that we have misrepresented a school in any way, please tell us immediately so that we can put things right.

**Copyright: Crown Copyright and Lucas Publications Ltd 2008**

**Database rights: Lucas Publications Ltd 2008**

**Programming: QlickiT ([www.qlickit.co.uk](http://www.qlickit.co.uk)) and Porism ([www.porism.com](http://www.porism.com))**

**Software: QlikView from [www.qliktech.com](http://www.qliktech.com)**

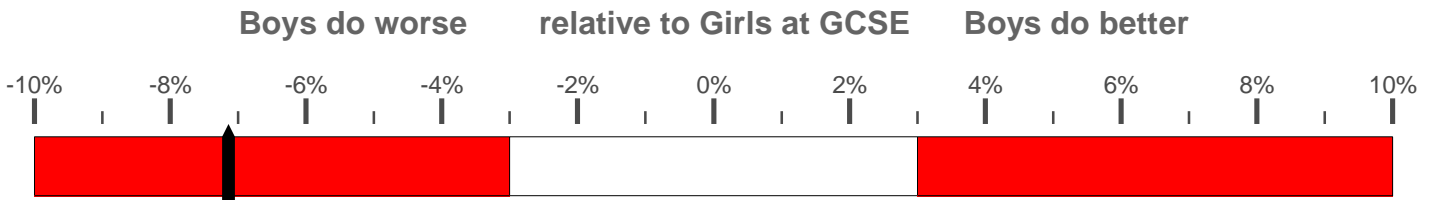
**This PDF may not be reproduced, in whole or in part, for any purpose other than personal use without the express permission of Lucas Publications Ltd**

**Lucas Publications Ltd may be contacted through The Good Schools Guide, [office@goodschoolsguide.co.uk](mailto:office@goodschoolsguide.co.uk)**

# SCHOOL DATA

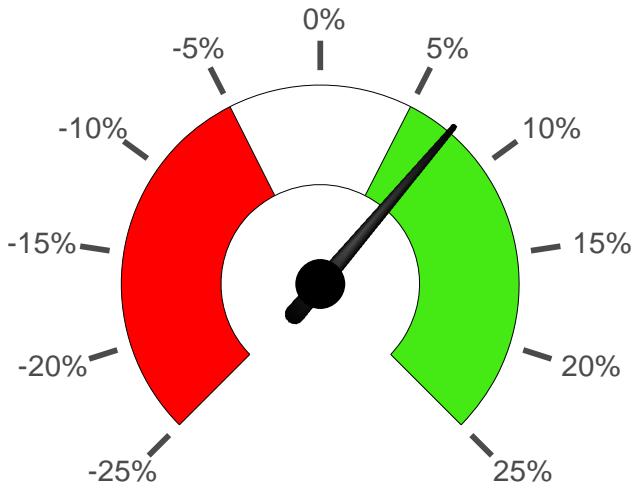
Address line 1	:College Road
Address line 2	:Ardingly
Address line 3	:
Town	:Haywards Heath
County	:West Sussex
Postcode	:RH17 6SQ
Telephone	:01444 893 000
Fax	:01444 893 001
Email	:registrar@ardingly.com
Web	:www.ardingly.com
Country	:England
Local Authority	:West Sussex
State or Independent	:Independent
Mainstream or Special	:Mainstream
Admissions policy	:Selective
Boarding or Day	:Takes Boarders
Religion	:Church of England (CofE)
School type	:Other Independent School
Genders in school	:Mixed
Genders in sixth form	:Mixed
Review in Good Schools Guide Online	:Yes
Senior School in Printed GSG*	:Yes
Junior School in Printed GSG*	:Yes
Full Review in Current SEN guide*	:Yes
Summary Review in Current SEN guide*	:Yes

\*: from mid-September this refers  
to the edition to be published  
in the following January



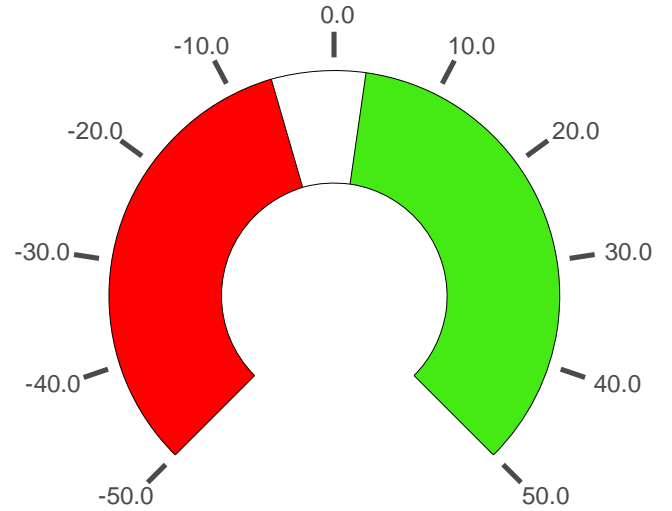
A score of, say, -4% indicates that boys score on average 4% fewer points than girls.

**Is the school expanding or shrinking?**



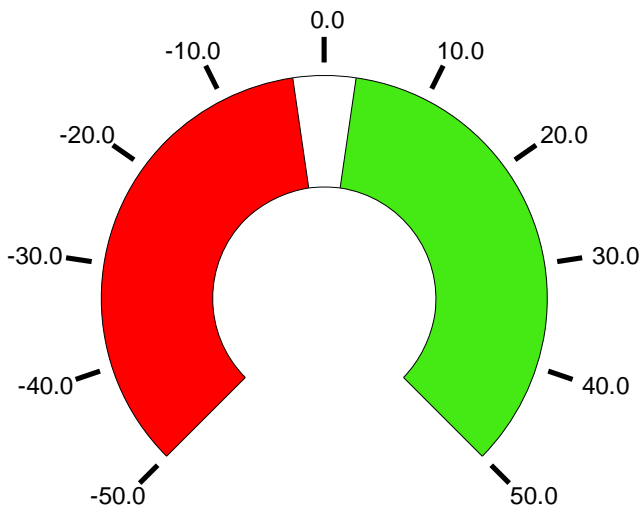
Change in the number of pupils on the school roll over the last 5 years.

**Do bright children do well here?**



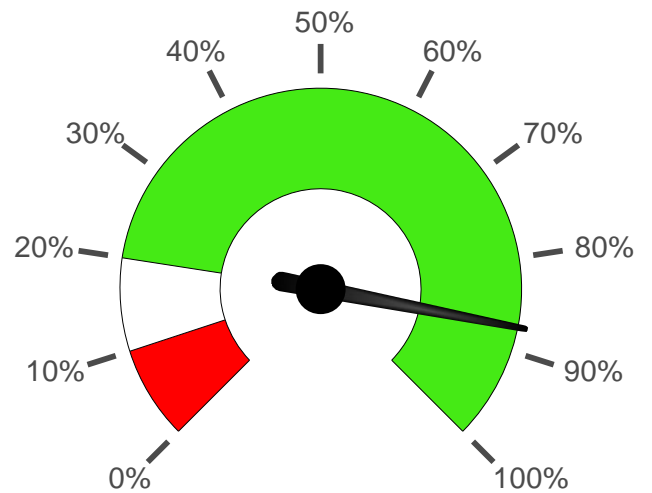
The average value added between KS2 and GCSE for children in the top quartile nationally at KS2.

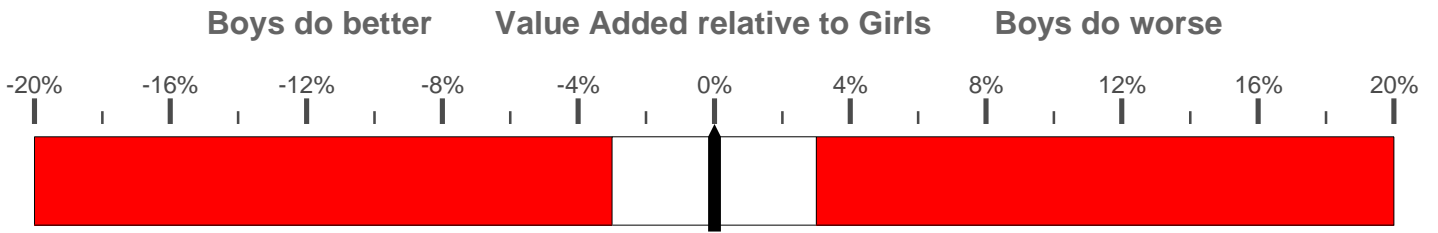
**Do children with SEN do well here?**



The average value added between KS2 and GCSE for children who are registered as having a Special Educational Need.

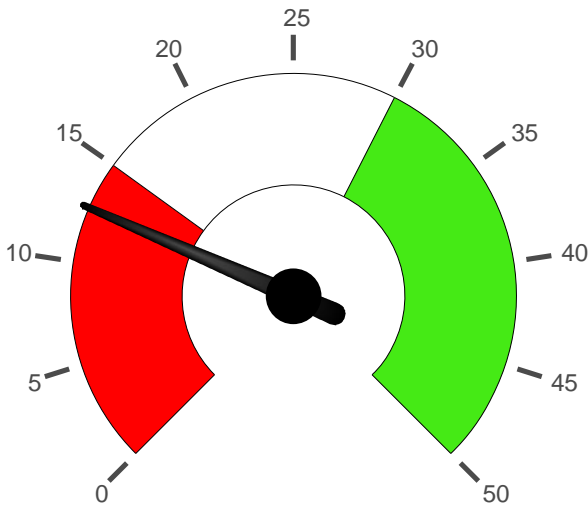
**What percentage of pupils take a modern language GCSE?**





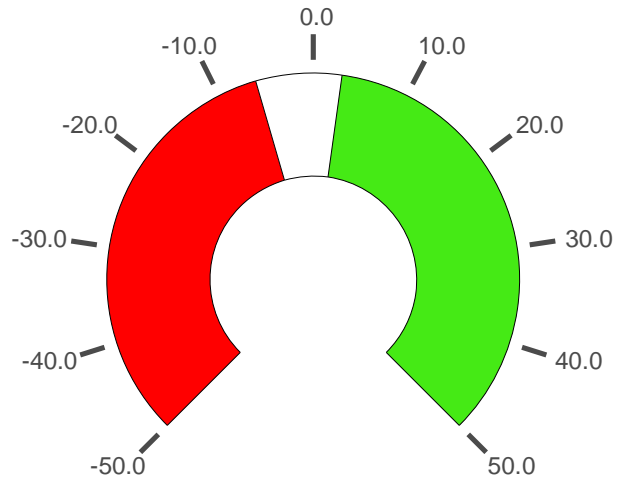
Compares the Key Stage 2 to GCSE value added performance of the boys with that of the girls.

**Are there a good number of bright children here?**



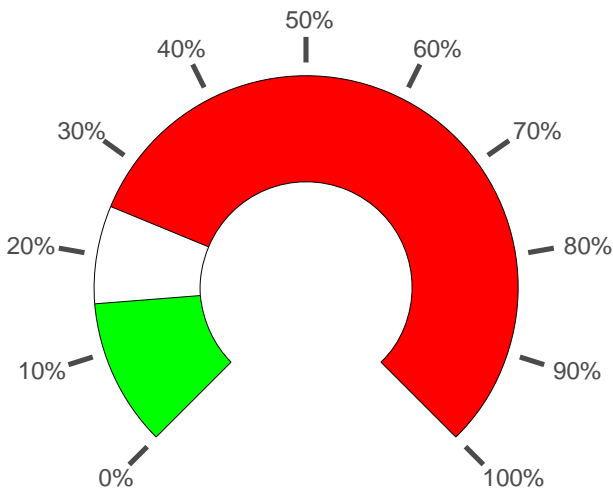
The average number of children in the top quartile nationally at GCSE.

**Average Overall Value Added**



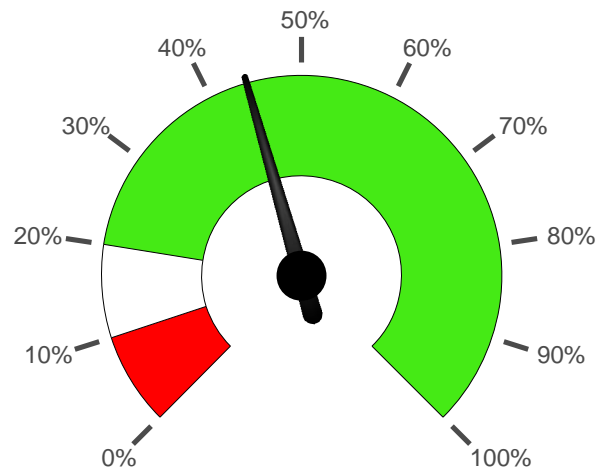
The average value added between Key Stage 2 and GCSE for all children.

**What percentage of pupils do really badly?**



The proportion of children in the lowest value added quartile between Key Stage 2 and GCSE. National average 25%.

**What percentage of children do really well?**



This chart shows the percentage of children gaining 5 A\* or A grades, or equivalent. 13% is the national average, 27% the average for independent schools.

## Five Good Subjects

A quick look at which subjects have notably good results.

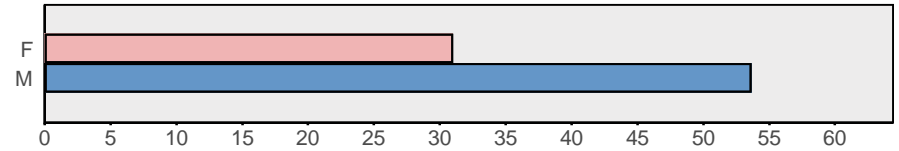
Gender	Qualification	Subject	WOW Factor
Girls	GCSE	Art & Design	65
		Drama and Theatre Studies	68
		History	64
		Physical Education/Sports Studies	63
		Religious Studies	66
Boys	GCSE	Chinese	61
		Drama and Theatre Studies	61
		History	62
		Physical Education/Sports Studies	67
		Science (Core)	68

## Rankings

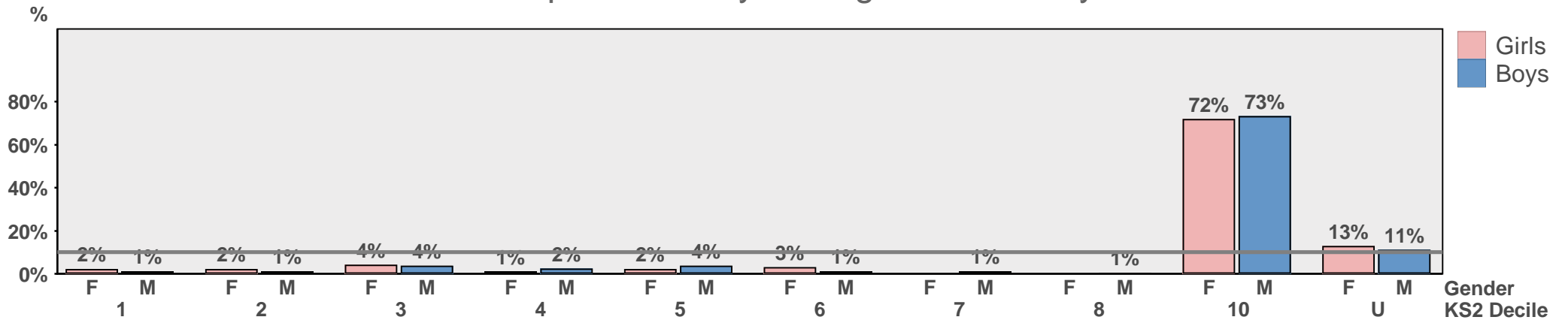
We have ranked schools by a range of characteristics. The 'out of' numbers vary, as some schools have no relevant data.

By % achieving 5 A* or A Grades at GCSE:	475 out of 5511
By % achieving 5 A to C grades at GCSE including Maths and English:	
By % of GCSEs at grades A* to B:	399 out of 5321
By % of pupils taking a modern language at GCSE:	
By % of pupils absent on the average day (low scores rank highest):	N/A
By value added score for pupils with SEN:	N/A
By value added score for pupils in the top quartile at Key Stage 2:	N/A
By % of pupils in the bottom value added quartile (low scores rank highest):	N/A
By overall value added score:	N/A

# Spread of Attainment

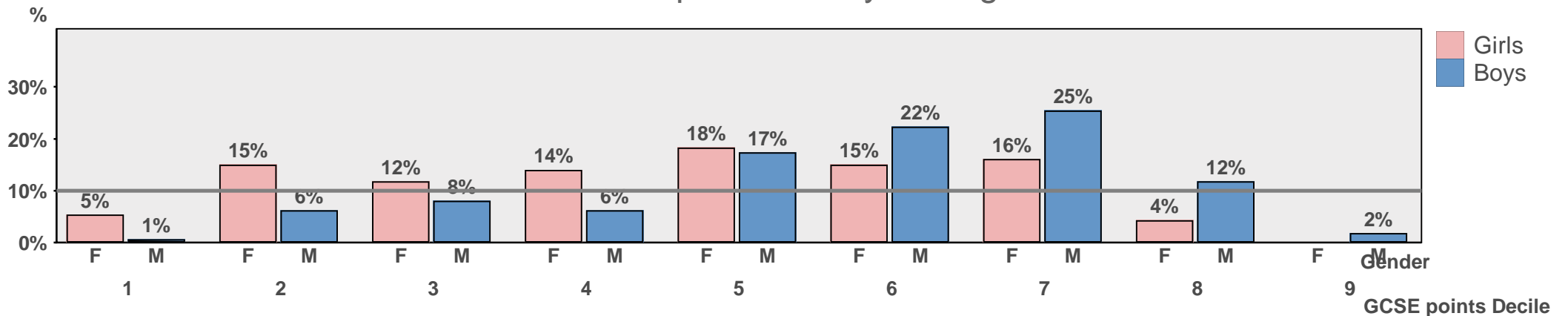


What's the academic profile of boys and girls when they arrive at school?



The proportion of pupils at Key Stage 2 from each of the 10 national attainment deciles - so the national average would be a chart with all bars at 10%. Decile 'U' contains those pupils for whom there is no data.

What's the academic profile of boys and girls at GCSE?



The proportion of pupils at Key Stage 4 from each of the 10 national attainment deciles - so the national average would be a chart with all bars at 10%. Decile 'U' contains those pupils for whom there is no data.

# SEN Attainment

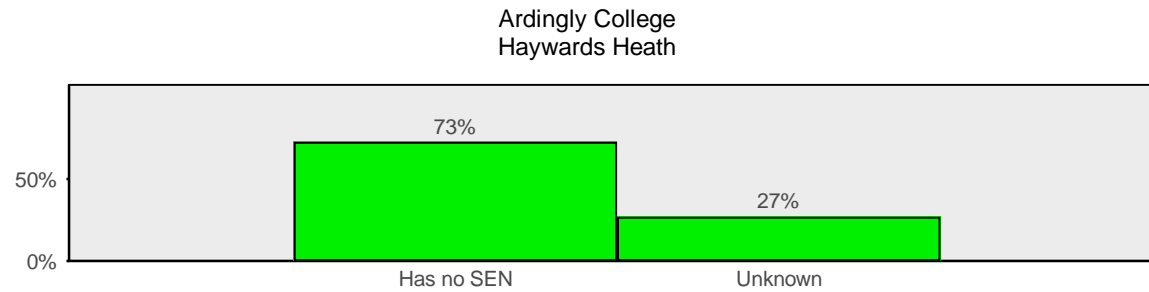


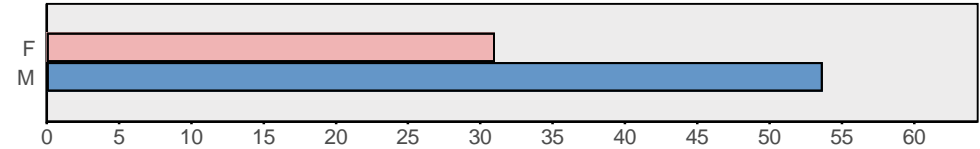
CHART NOT SHOWN AS WE HAVE DATA ON FEWER THAN 10 SEN PUPILS

This chart highlights children who have been registered as having a Special Educational Need, and shows what their levels of achievement were at Key Stage 2. Decile 'U' contains those pupils for whom there is no data.

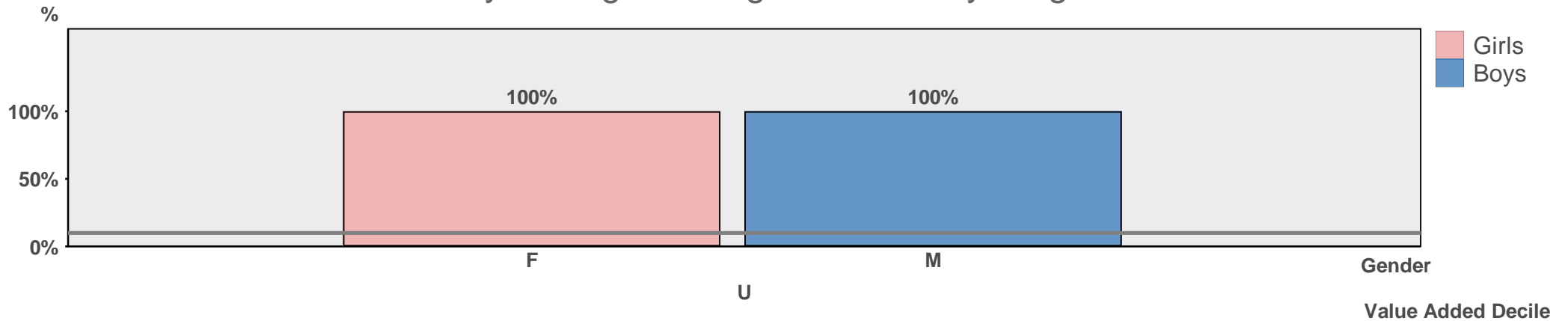
CHART NOT SHOWN AS WE HAVE DATA ON FEWER THAN 10 SEN PUPILS

This chart highlights children who have been registered as having a Special Educational Need, and shows what their levels of achievement were at GCSE.

# Value Added Analysis



How well are boys and girls doing between Key Stage 2 and GCSE?

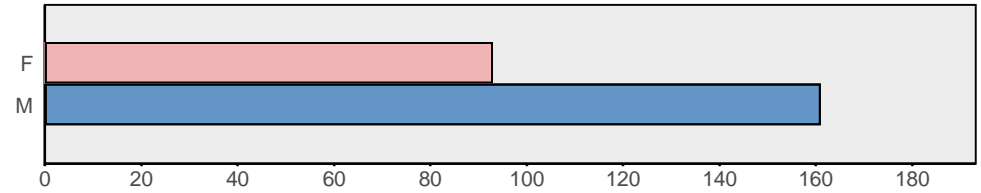


The spread of Key Stage 2 to GCSE value added: the height of the bars represents the percentage of children in each national decile (so the bars labelled '1' show the percentage of children performing as well as the top 10 per cent nationally). Decile 'U' contains those pupils for whom there is no data.

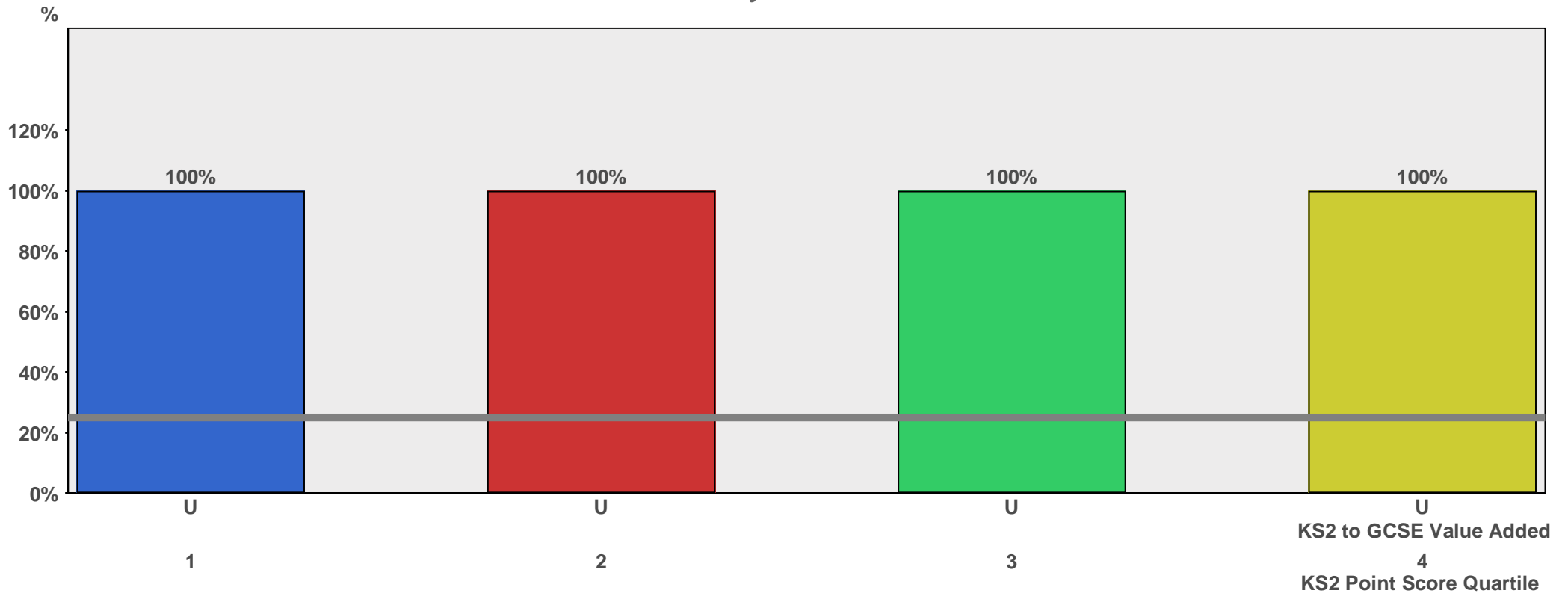
CHART NOT SHOWN AS WE HAVE DATA ON FEWER THAN 10 SEN PUPILS

The spread of Key Stage 2 to GCSE value added for children with Special Educational Needs: the height of the bars represents the percentage of children in each national decile (so the bars labelled '1' show the percentage of children performing as well as the top 10 per cent nationally). Decile 'U' contains those pupils for whom there is no data.

# How Value Added Varies with KS2 Achievement



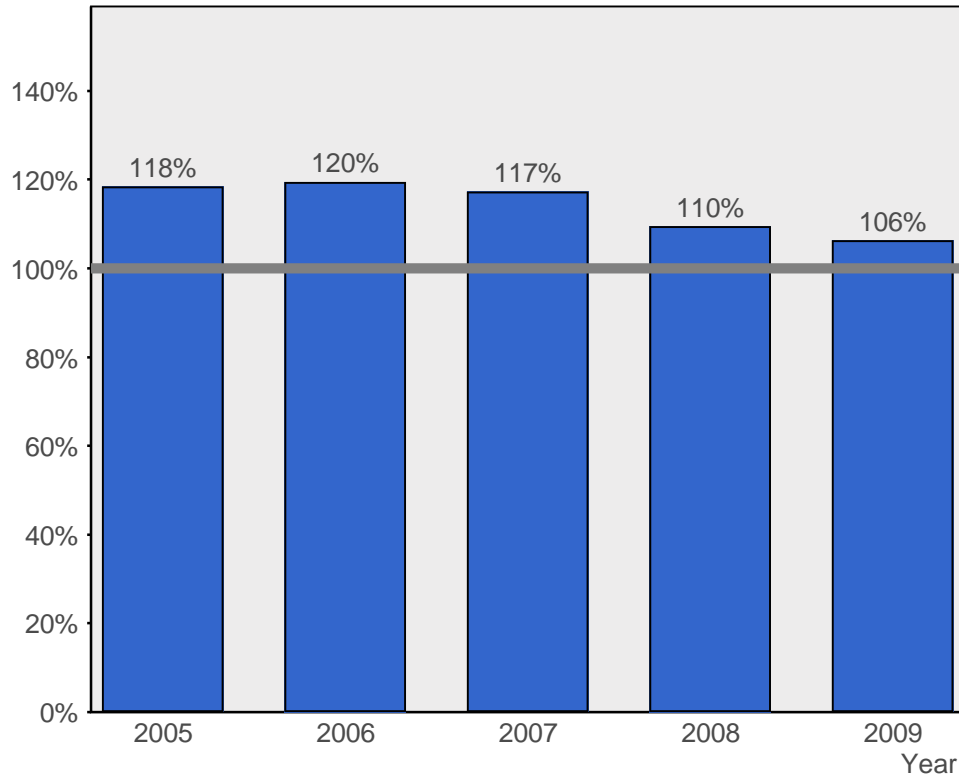
How does a child like yours fare in this school?



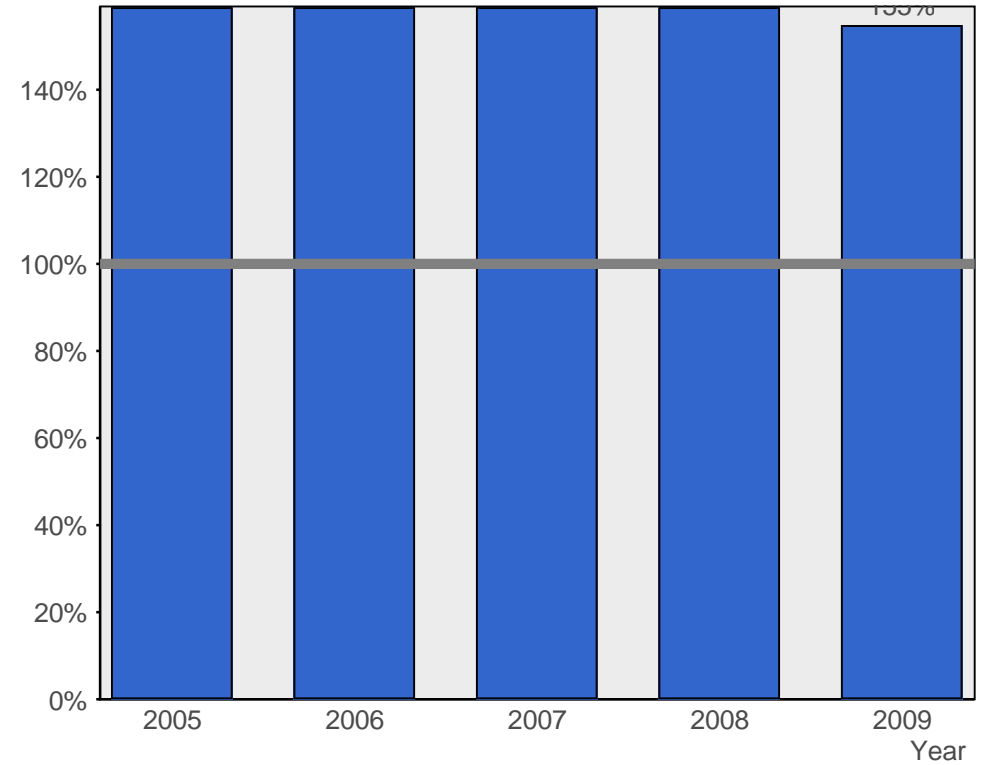
The spread of Key Stage 2 to GCSE 2 value added scores for each Key Stage 2 quartile. So if your child is a top performer, look at the top KS2 quartile (in blue on the left) and see what proportion of children like that have good (quartile 1, the left-hand of the four blue bars), so-so or bad value added scores. If your child is middle of the road, look for a similar pattern in the red and green bars. If he struggles, look at the yellow bars on the right. Quartile 'U' contains those pupils for whom there is no data.

# Trends in Attainment

### Points Per Pupil as % of National Last 5 Years



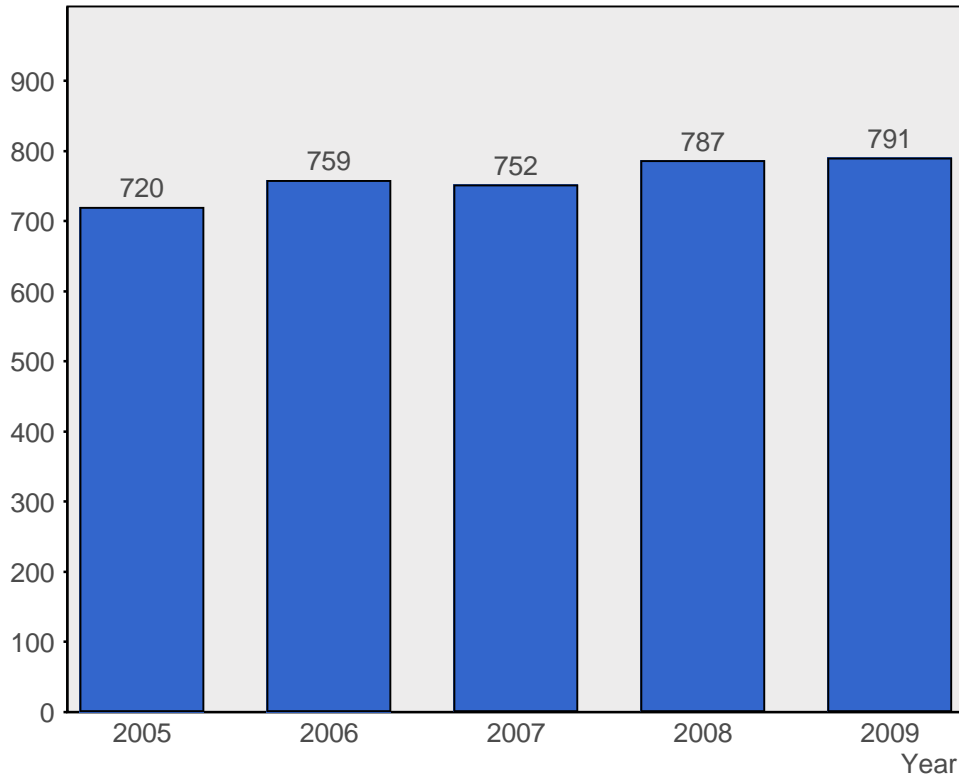
### 5 A/C at GCSE as % of National Last 5 Years



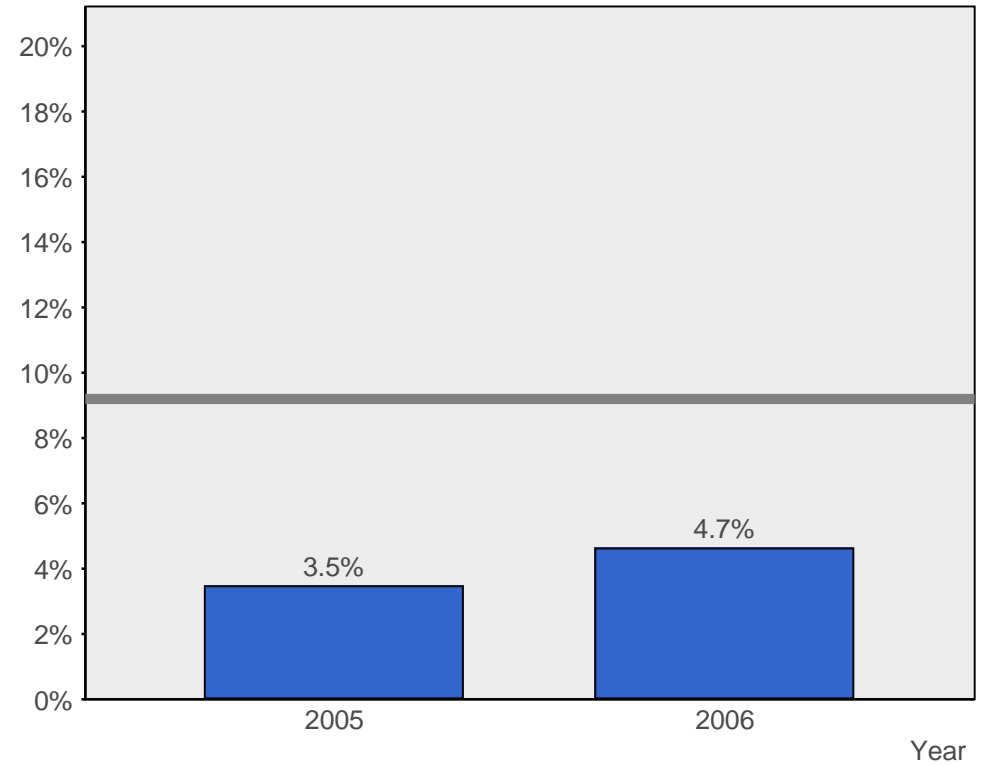
If the values are well below the national average while points per exam are near average, pupils are taking fewer exams than usual.

# Trends in Numbers

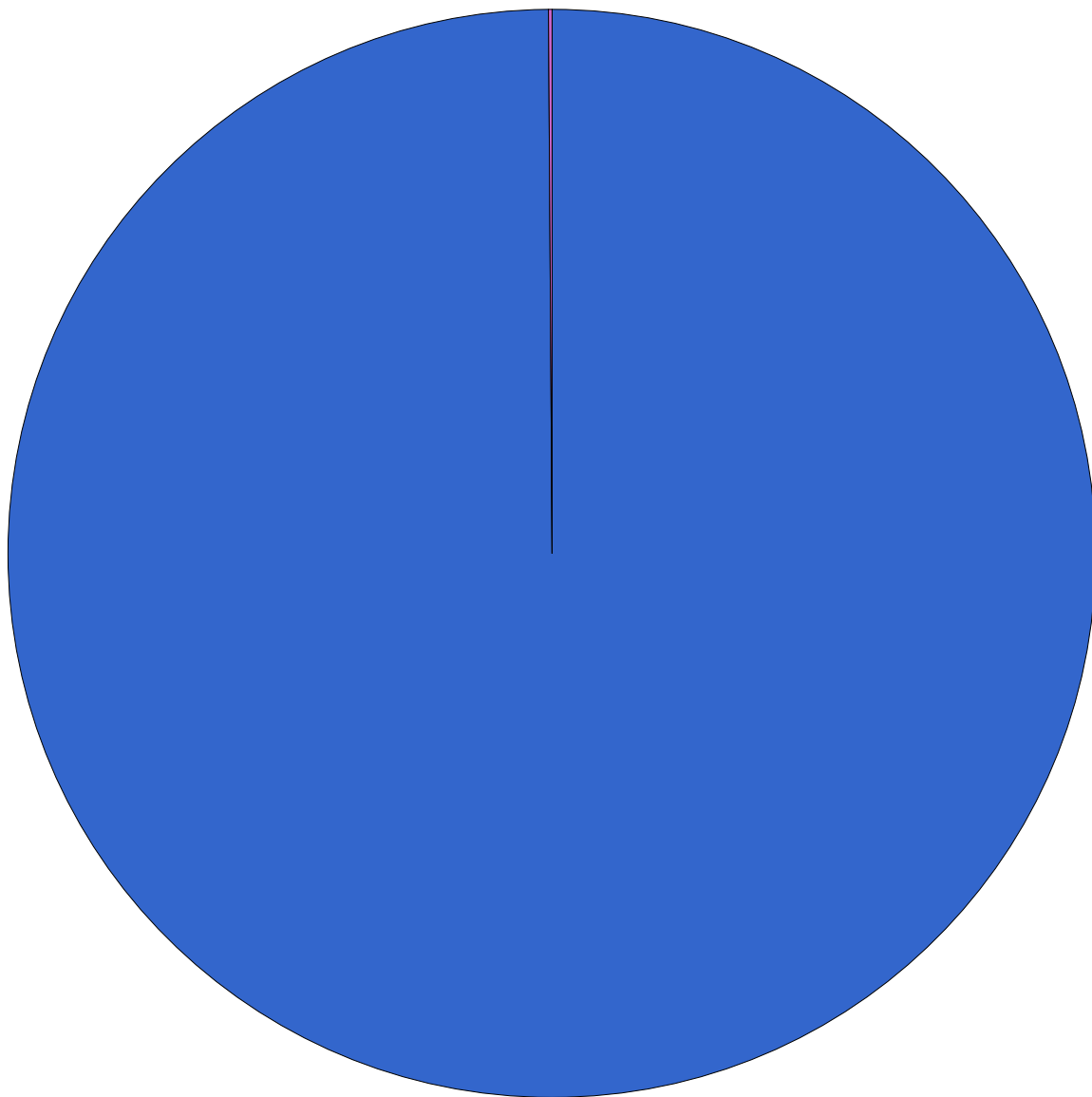
## Pupils on Roll Last 5 Years



## Total Pupil Absence Last 5 Years



## Which are the most important qualifications that they take here?

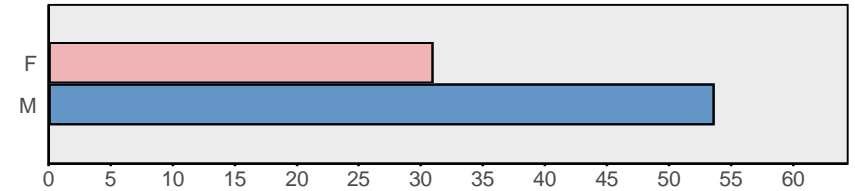


### Qualification

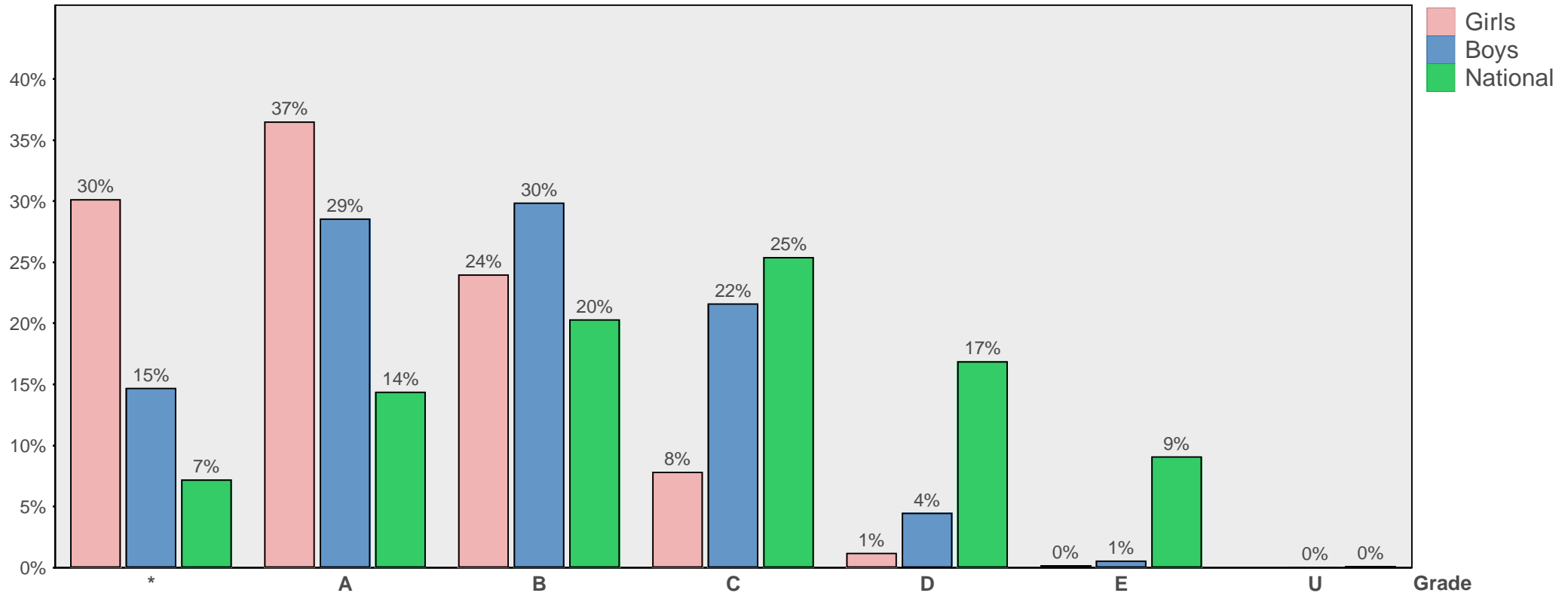
GCSE	99.89%
GCSE Short Course	0.11%

This chart shows the balance between the principal qualifications studied in this school, using the percentage of points earned by each qualification.

# Distribution of Grades

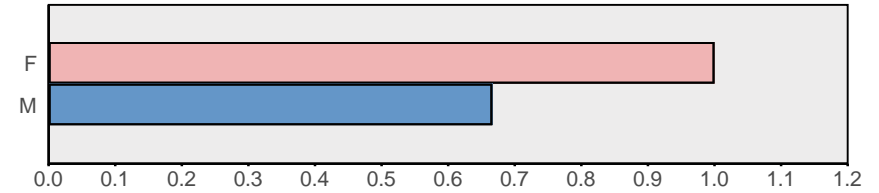


How do the percentages getting each GCSE grade compare with the national profile?

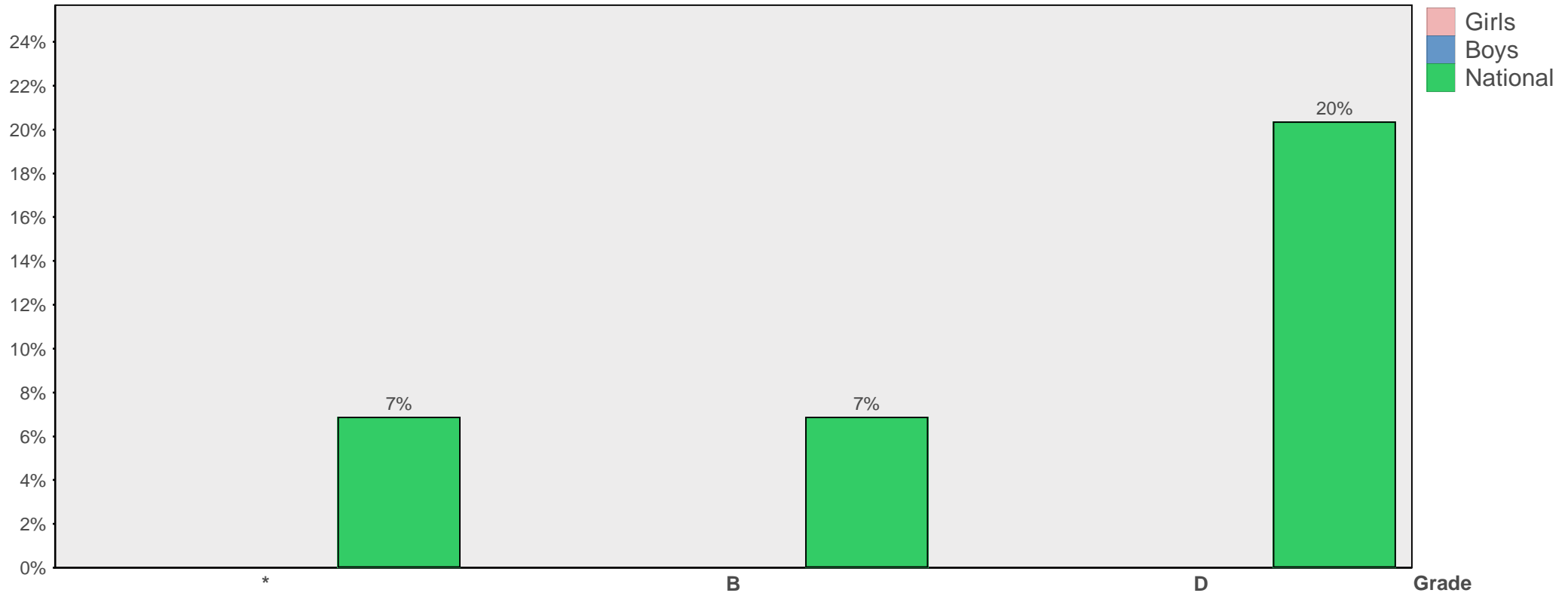


'National' percentages are based on data at subject/gender level. The percentages shown for an individual school are therefore sensitive to subject choices and to the gender(s) in the school.

# Distribution of Grades

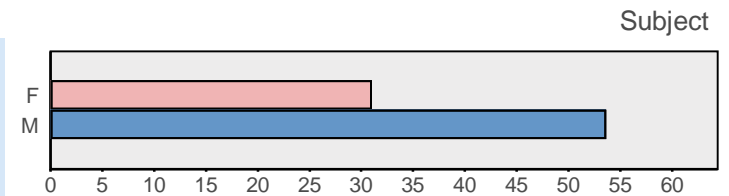
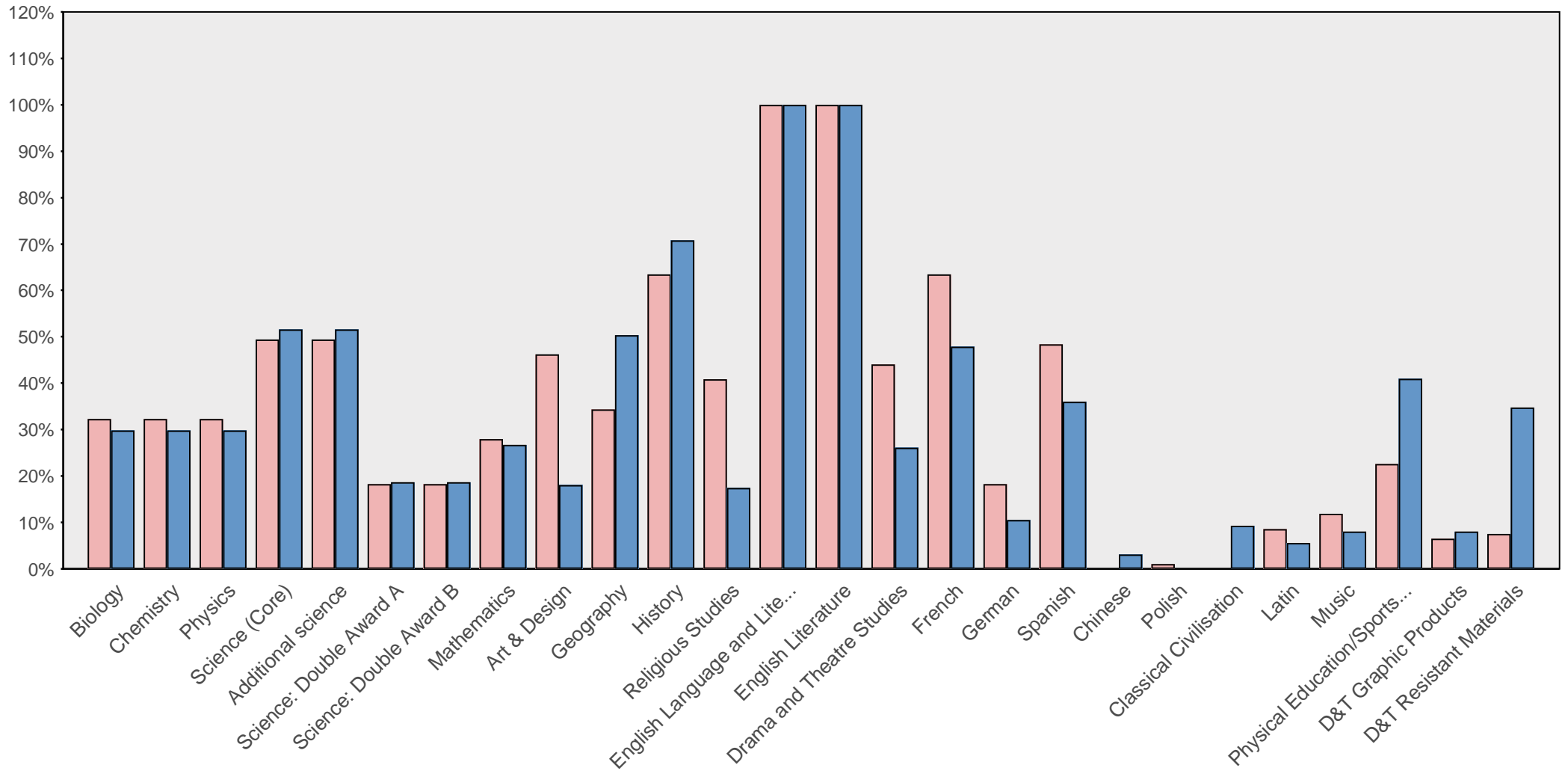


How do the percentages getting each GCSE Short Course grade compare with the national profile?

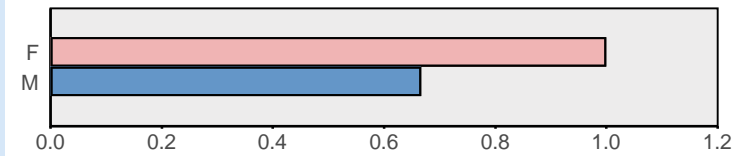
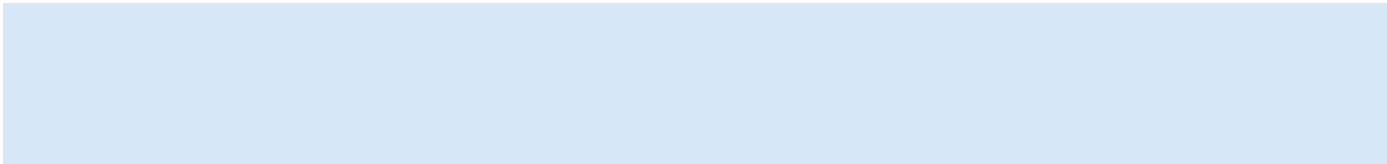


'National' percentages are based on data at subject/gender level. The percentages shown for an individual school are therefore sensitive to subject choices and to the gender(s) in the school.

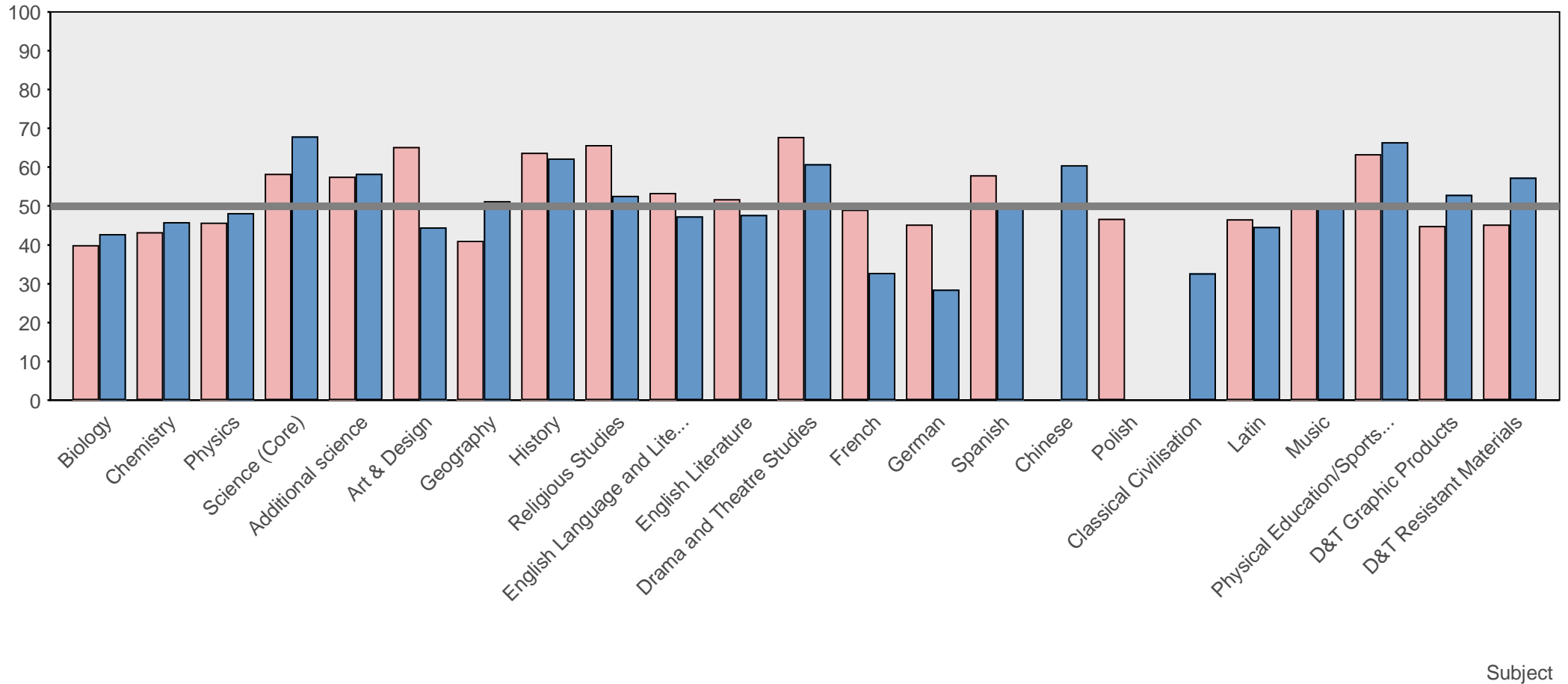
## Percentage of pupils taking each GCSE subject



No data to display

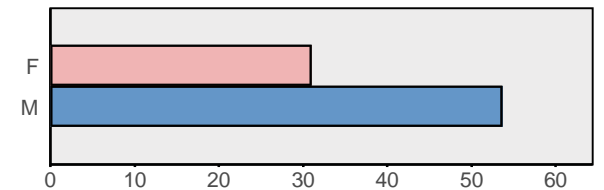


## How well does the school do at each GCSE subject?

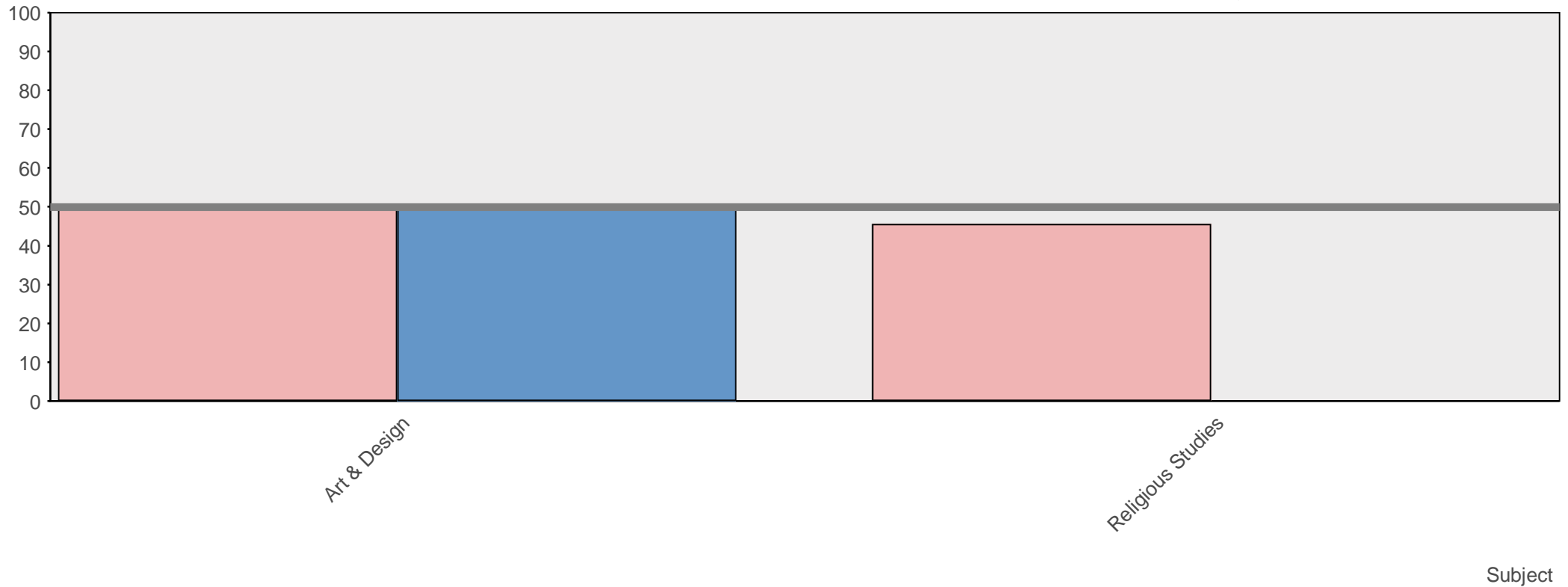


We've given a score - the Wow Factor - to each subject that the school offers, so that you can compare one against the other and look for the areas where the school excels. The Wow Factor is a combination of the scores that we have calculated for the popularity of each subject, the success that the pupils taking it experience, and the percentage of A\* to B grades.

Scores range from 100 (the maximum) to zero; the line at 50 indicates subjects that are averagely good (or have so few pupils taking them that we can't make a judgement on their quality).

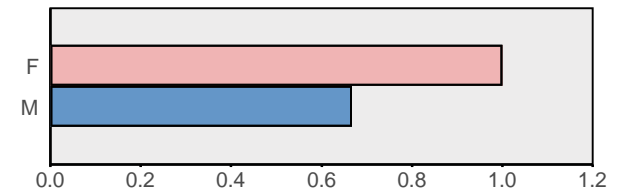


## How well does the school do at each GCSE Short Course subject?

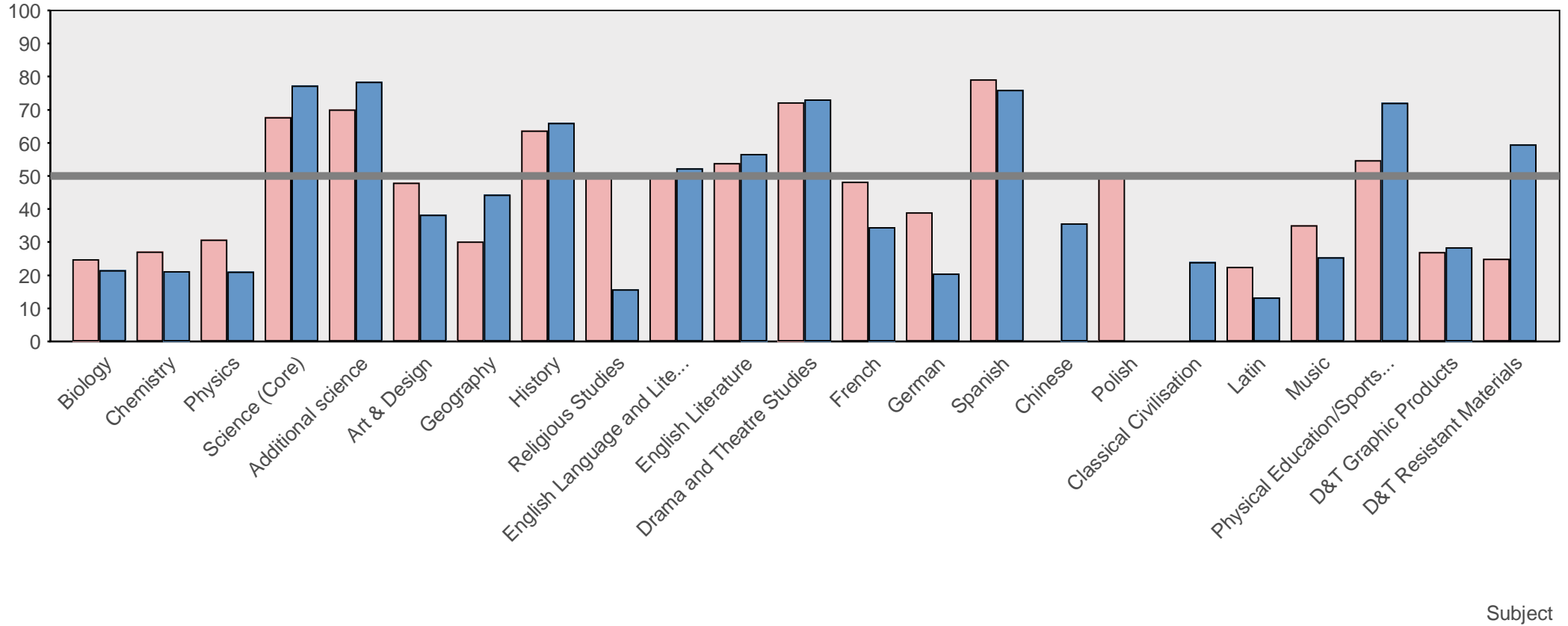


We've given a score - the Wow Factor - to each subject that the school offers, so that you can compare one against the other and look for the areas where the school excels. The Wow Factor is a combination of the scores that we have calculated for the popularity of each subject, the success that the pupils taking it experience, and the percentage of A\* to B grades.

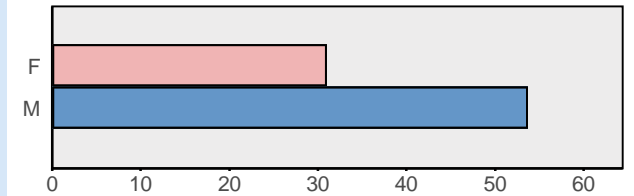
Scores range from 100 (the maximum) to zero; the line at 50 indicates subjects that are averagely good (or have so few pupils taking them that we can't make a judgement on their quality).



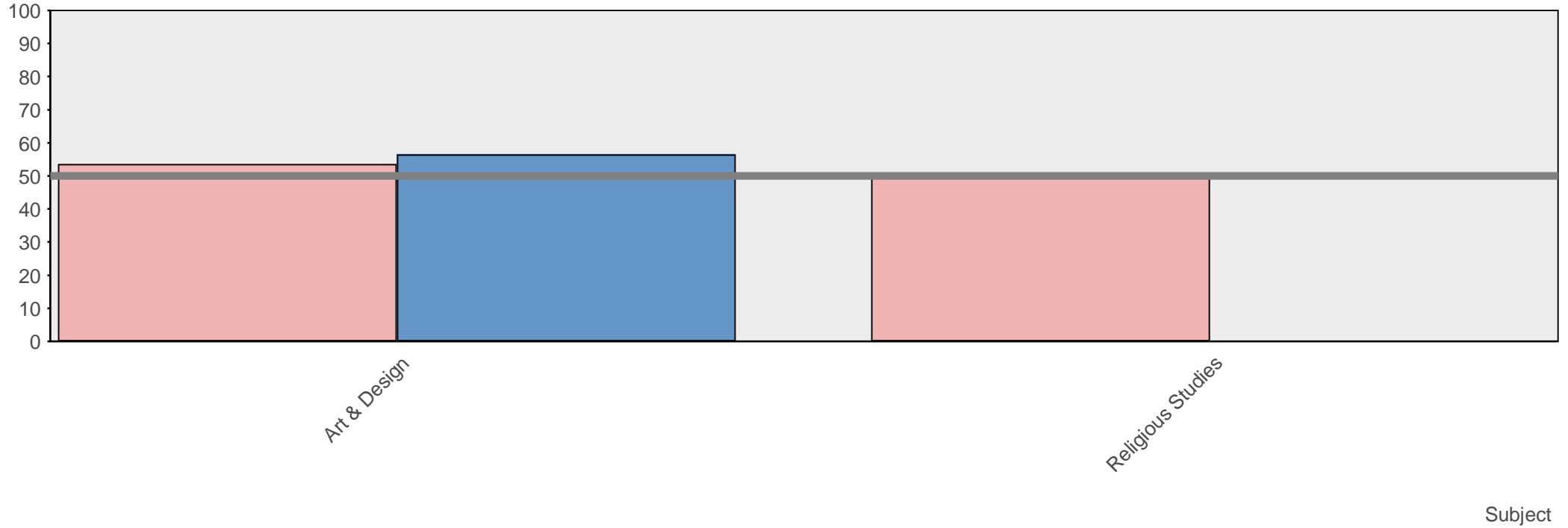
## How popular is each GCSE subject, relative to similar schools?



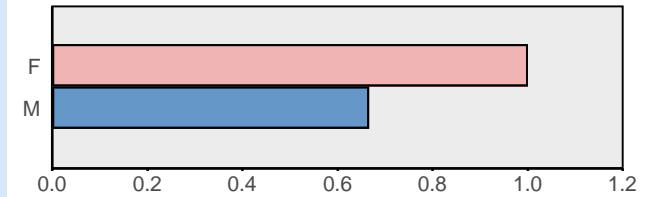
After allowing for the size of the school and the number of subjects on offer, we have calculated a score for each subject's popularity relative to the average popularity of that subject in similar schools. Scores range from 100 (the maximum) to zero; the line at 50 indicates subjects that are averagely popular (or have so few pupils taking them that we can't make a judgement). In our experience, subjects that are well taught tend to become popular, as their reputation spreads from pupil to pupil.



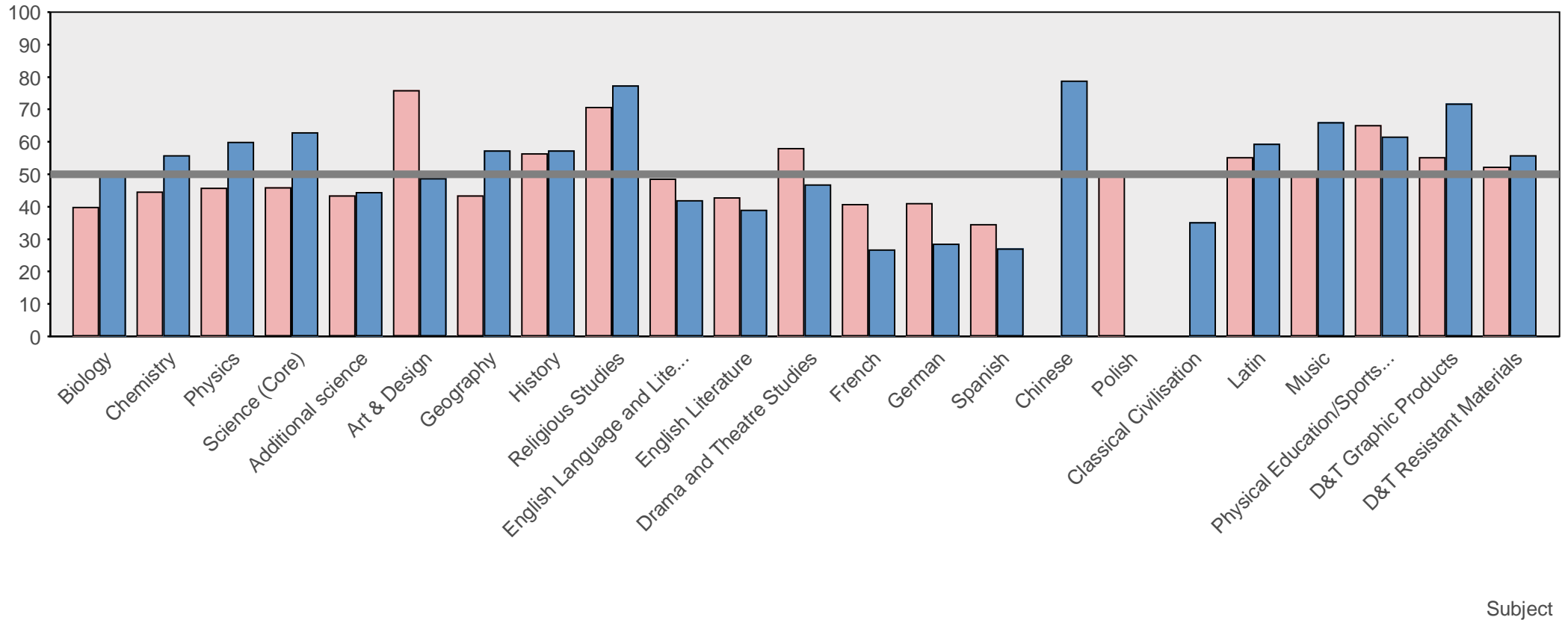
## How popular is each GCSE Short Course subject, relative to similar schools?



After allowing for the size of the school and the number of subjects on offer, we have calculated a score for each subject's popularity relative to the average popularity of that subject in similar schools. Scores range from 100 (the maximum) to zero; the line at 50 indicates subjects that are averagely popular (or have so few pupils taking them that we can't make a judgement). In our experience, subjects that are well taught tend to become popular, as their reputation spreads from pupil to pupil.

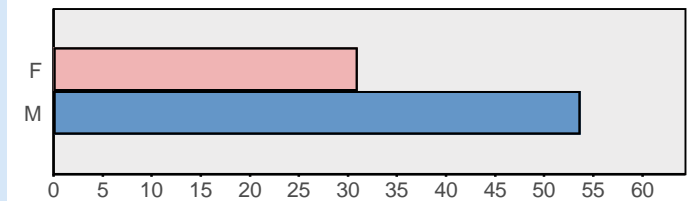


## How well do pupils do in each GCSE subject, relative to their performance in other exams?

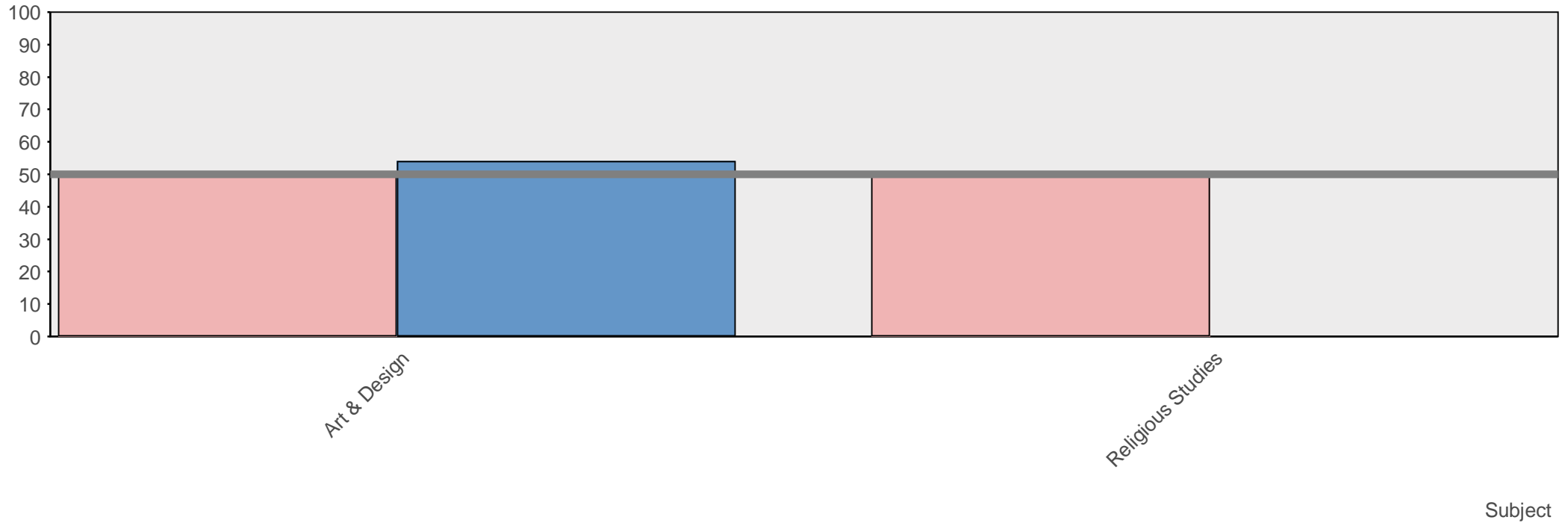


We have compared the grades obtained by pupils taking each subject with the grades obtained by those same students in the other subjects that they took. Scores range from 100 (the maximum) to zero; the line at 50 indicates subjects where pupils achieve (on average) their average grade for all the exams that they take (or where so few pupils are taking a subject that we can't make a judgement).

In our experience, subjects that are well taught tend to inspire students to better results than they achieve elsewhere.

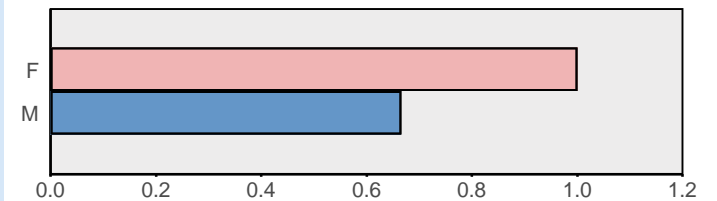


## How well do pupils do in each GCSE Short Course subject, relative to their performance in oth...

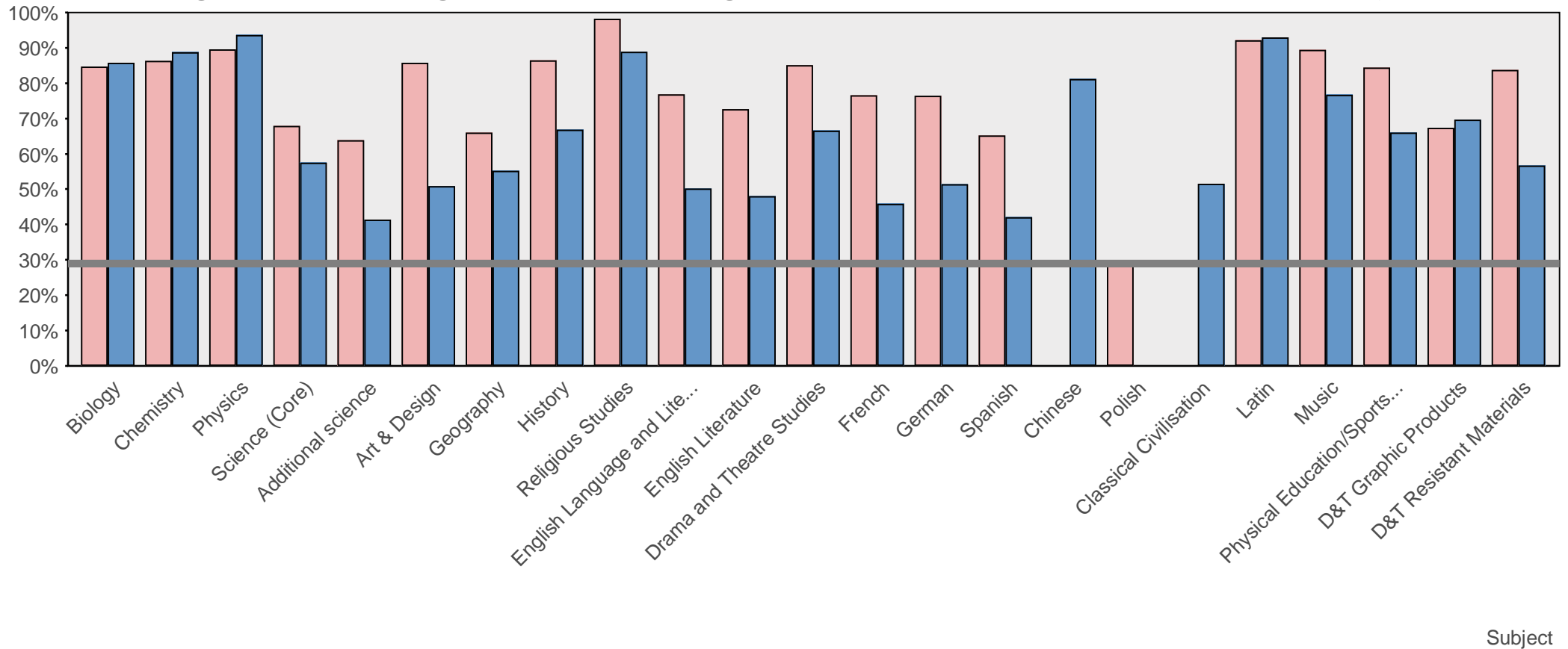


We have compared the grades obtained by pupils taking each subject with the grades obtained by those same students in the other subjects that they took. Scores range from 100 (the maximum) to zero; the line at 50 indicates subjects where pupils achieve (on average) their average grade for all the exams that they take (or where so few pupils are taking a subject that we can't make a judgement).

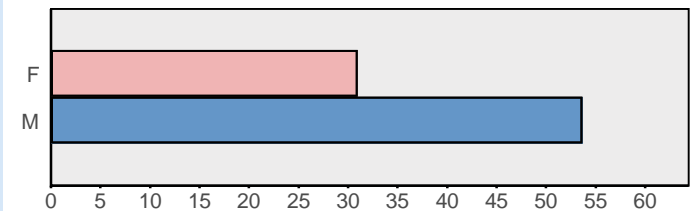
In our experience, subjects that are well taught tend to inspire students to better results than they achieve elsewhere.



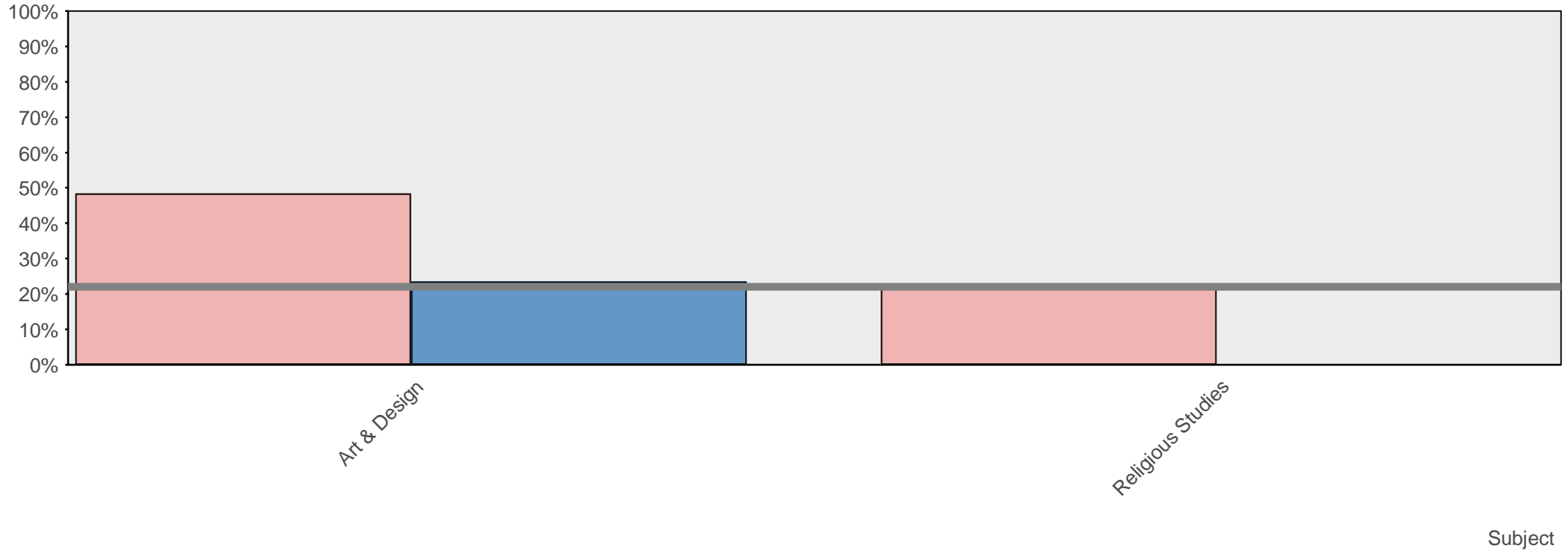
## Weighted percentage of A\*, A and B grades (or equivalent) in each GCSE subject



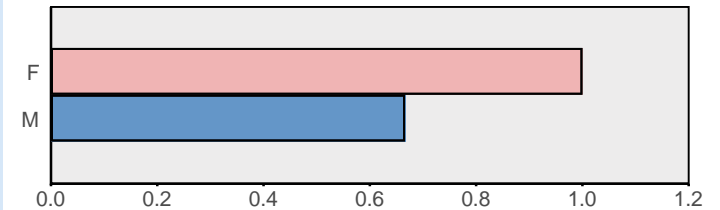
We have given a double weighting to the percentages of A\* and A grades (or equivalent), added that to the percentage of B grades, and have scaled that back to a single percentage. Scores range from 100% (the maximum) to zero; the grey line indicates the national average. Subjects which only have a few pupils taking them have been scaled back towards the national average.



# Weighted percentage of A\*, A and B grades (or equivalent) in each GCSE Short Course subject



We have given a double weighting to the percentages of A\* and A grades (or equivalent), added that to the percentage of B grades, and have scaled that back to a single percentage. Scores range from 100% (the maximum) to zero; the grey line indicates the national average. Subjects which only have a few pupils taking them have been scaled back towards the national average.



### Coda

We would welcome your questions and comments - we are sure that we could explain things better, show things in different ways, add new sources of data (indeed we have a year full of plans to do just that.

We'll do it much better though if we have your help. Please email us at:

[DataAnalysis@GoodSchoolsGuide.co.uk](mailto:DataAnalysis@GoodSchoolsGuide.co.uk)

and tell us how we could improve.