



SCHOOL RESULTS ANALYSIS

at Key Stage 2 (age 11)

for

**Belleville Primary School
London**

**from The Good Schools Guide
www.goodschoolsguide.co.uk**

For detailed advice on using this report, please refer to www.goodschoolsguide.co.uk

Use this report to prompt questions more than to reach conclusions. The more students a school has, the more reliable these charts will be. School character and quality are generally slow to change, so previous years' results tell you a good deal about what to expect in the future, but keep your eyes open for changes on the ground. We have done our best to ensure that these analyses are accurate and fair. But we are imperfect, and we have had to make decisions on how best to present data. If you feel that we have misrepresented a school in any way, please tell us immediately so that we can put things right.

Copyright: Crown Copyright and Lucas Publications Ltd 2008

Database rights: Lucas Publications Ltd 2008

Programming: QlickiT (www.qlickit.co.uk) and Porism (www.porism.com)

Software: QlikView from www.qliktech.com

**This PDF may not be reproduced, in whole or in part, for any purpose other than personal use
without the express permission of Lucas Publications Ltd**

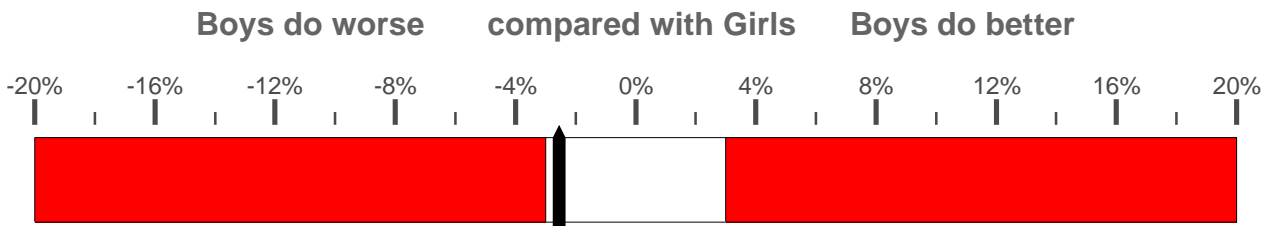
**Lucas Publications Ltd may be contacted through The Good Schools Guide,
office@goodschoolsguide.co.uk**

SCHOOL DATA

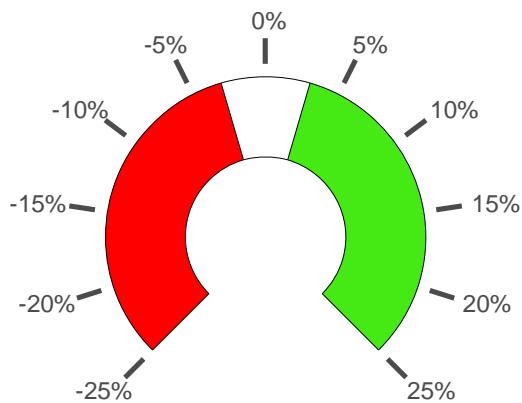
Address line 1	:Webb's Road
Address line 2	:Battersea
Address line 3	:
Town	:London
County	:
Postcode	:SW11 6PR
Telephone	:02072 286 727
Fax	:020 7228 8070
Email	:info@belleville.wandsworth.sch.uk
Web	:www.belleville-school.org.uk/
Country	:England
Local Authority	:Wandsworth
State or Independent	:State
Mainstream or Special	:Mainstream
Admissions policy	:Non-selective
Boarding or Day	:Day Only
Religion	:Non-denominational
School type	:Community School
Genders in school	:Mixed
Genders in sixth form	:Unknown
Review in Good Schools Guide Online	:Yes
Senior School in Printed GSG*	:Yes
Junior School in Printed GSG*	:Yes
Full Review in Current SEN guide*	:Yes
Summary Review in Current SEN guide*	:Yes

*: from mid-September this refers to the edition to be published in the following January

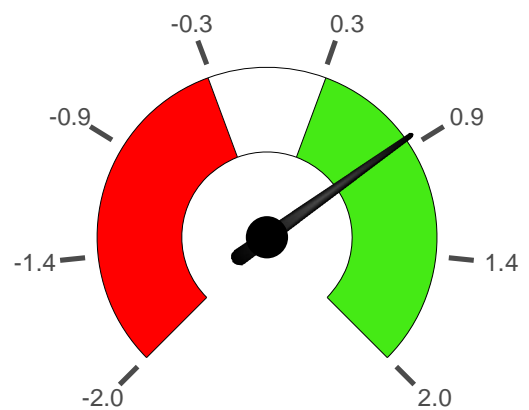
KS2 Key Indicators



Is the school expanding or shrinking?

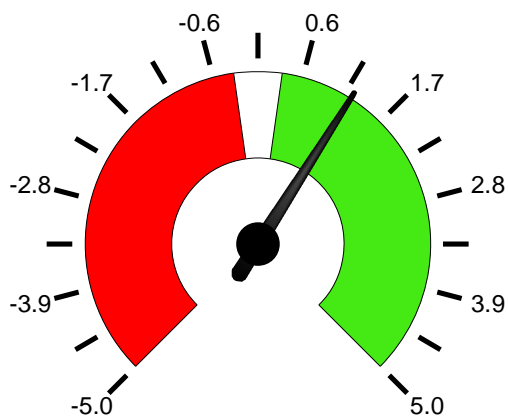


Do bright children do well here?



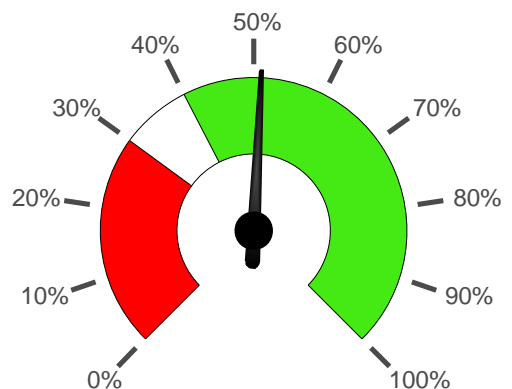
Change in school roll over the last 5 years.

Do children with SEN do well here?



The average value added between Key Stage 1 and Key Stage 2 for children whose Key Stage 1 results are in the top quartile nationally.

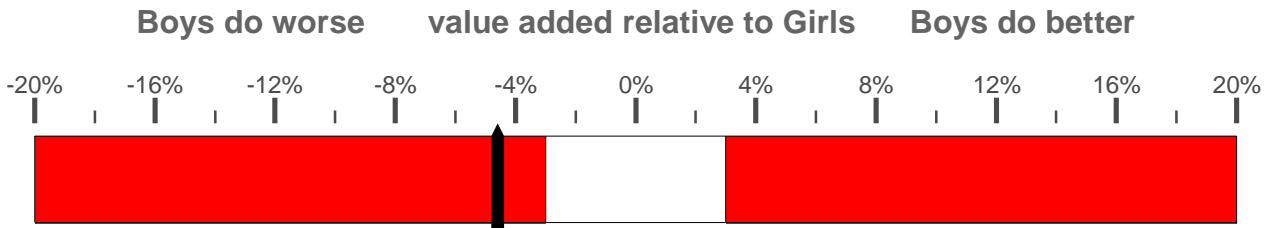
What percentage of children do really well?



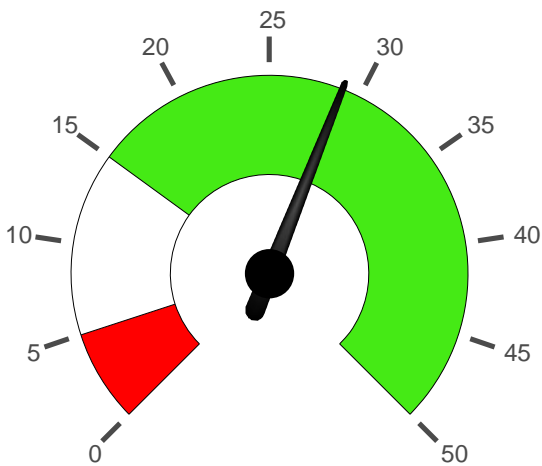
The average value added between Key Stage 1 and Key Stage 2 for children who are registered as having a Special Educational Need

The percentage of children reaching level 5 at Key Stage 2.

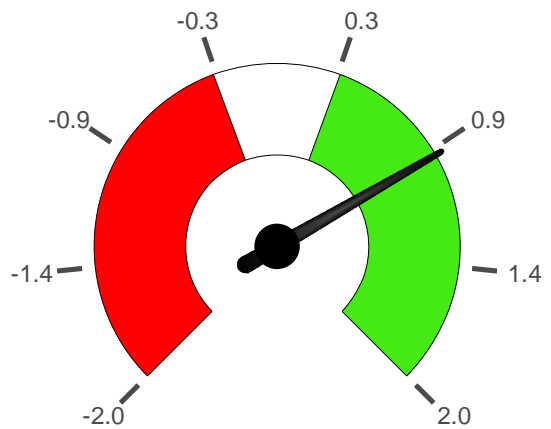
KS2 Additional Indicators



Are there a good number of bright children here?

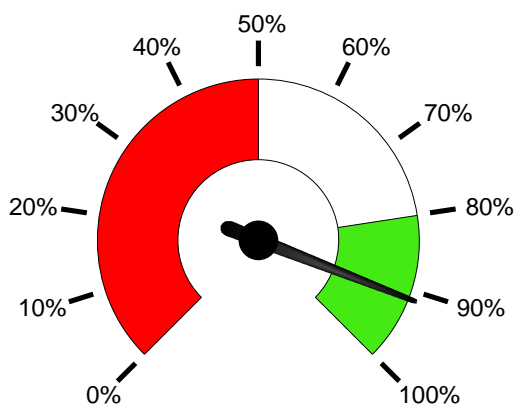


Average overall value added



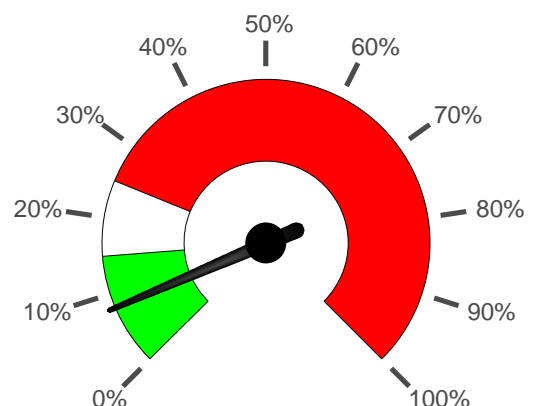
The average number of children in the top quartile nationally at Key Stage 2.

What percentage of pupils are up to speed for secondary school?



The average value added between Key Stage 1 and Key Stage 2 for all children.

What percentage of pupils do really badly?



The proportion of children reaching the expected level (level 4) at Key Stage 2.

The proportion of children in the lowest value added quartile between Key Stage 1 and Key Stage 2 (national average 25%).

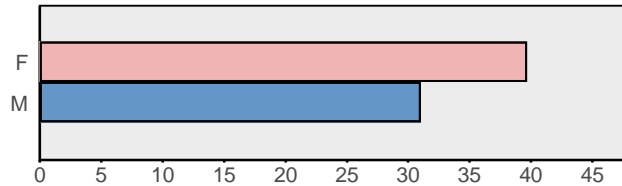
Rankings

We have ranked schools by a range of characteristics. The 'out of' numbers vary, as some schools have no relevant data.

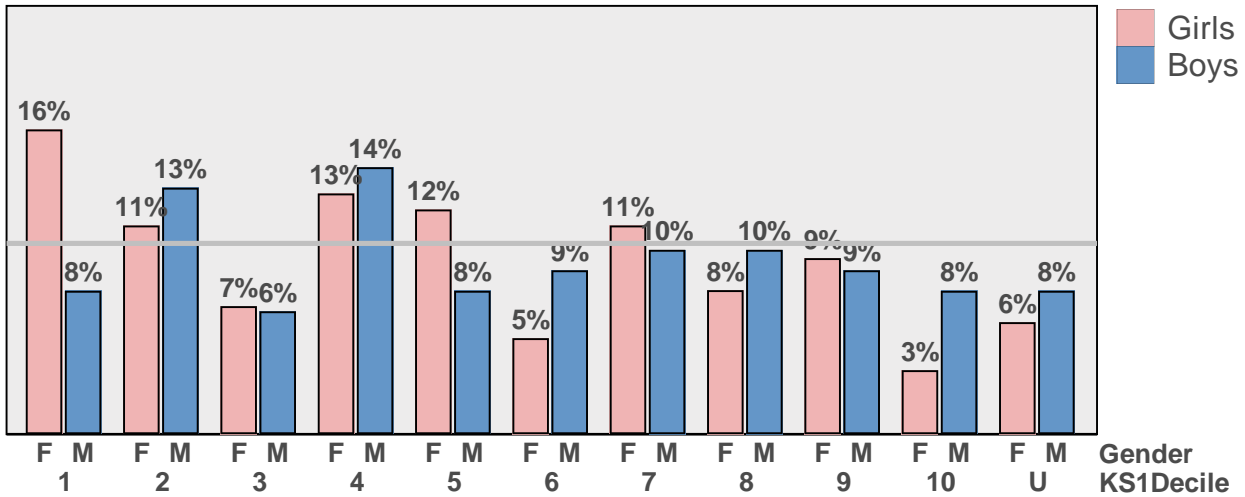
Contextual Value Added	:2298 out of 15458
Contextual Value Added for bright children	:1470 out of 14680
Contextual Value Added for children with SEN	:2780 out of 15411
Keeping pupils out of the bottom CVA quartile	:1994 out of 15458
Percentage of pupils reaching level 5 at KS2	:2141 out of 14373
Keeping pupils in school (low absence rates)	:6310 out of 14595

Spread of Attainment

Average No of Pupils

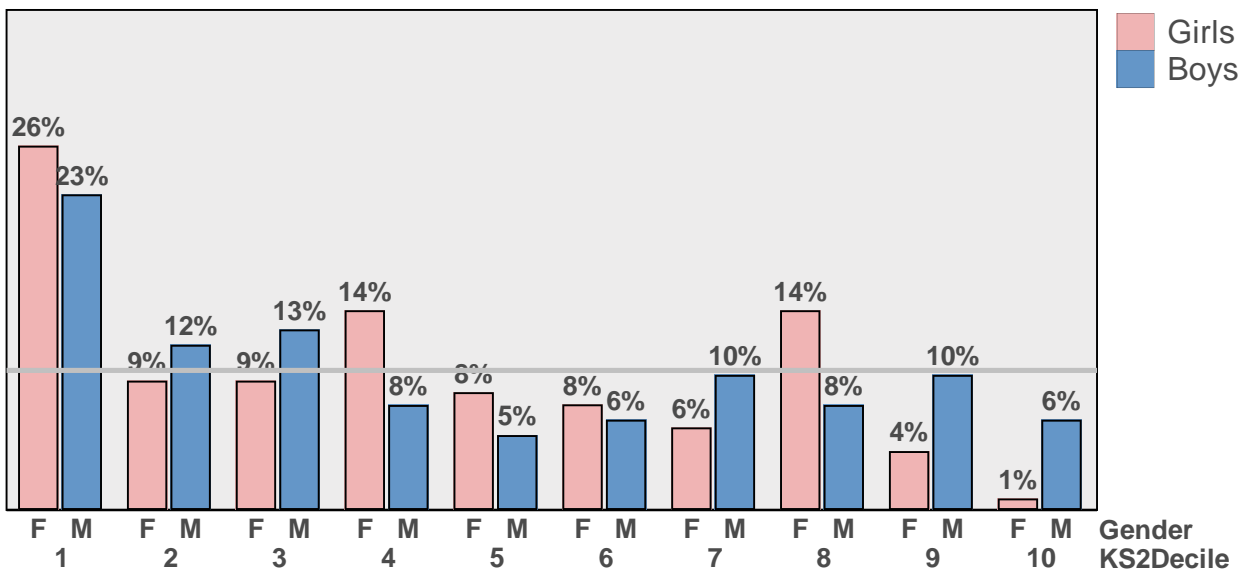


What's the academic profile of boys and girls at age 7?



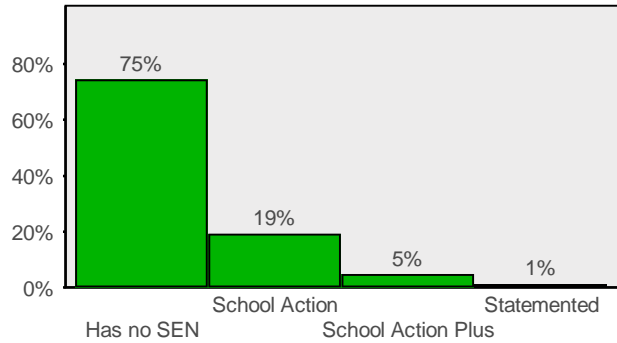
The proportion of pupils at Key Stage 1 from each of the 10 national attainment deciles - so the national average would be a chart with all bars at 10%.

What's the academic profile of boys and girls at Key Stage 2?

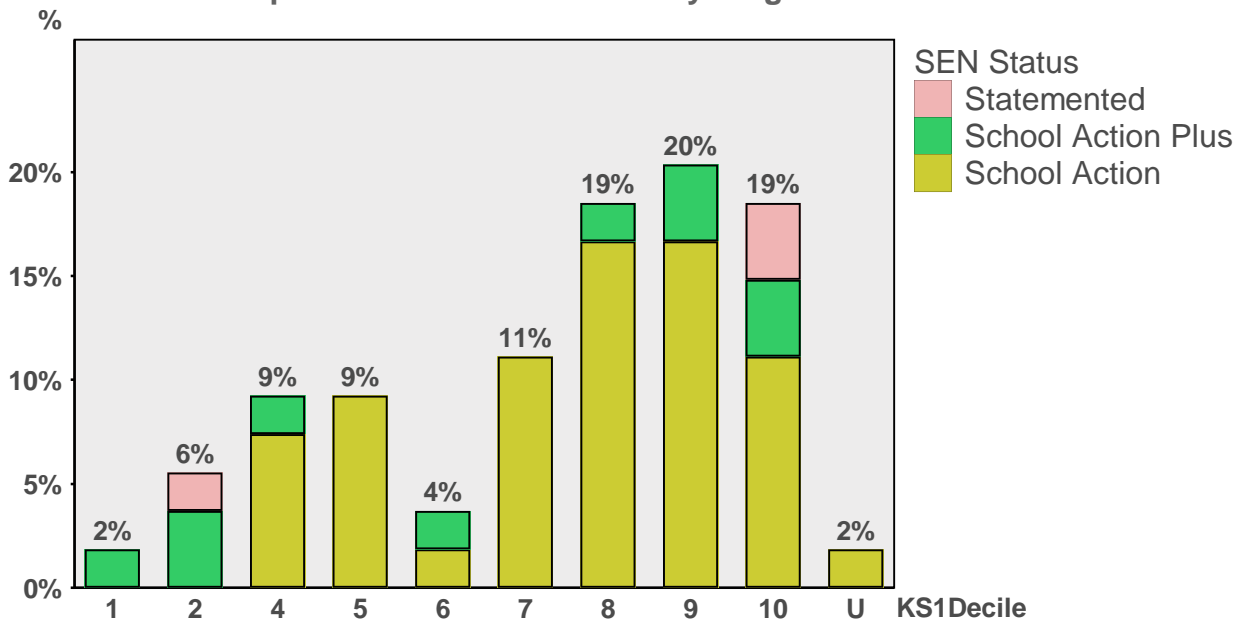


The proportion of pupils at Key Stage 2 from each of the 10 national attainment deciles - so the national average would be a chart with all bars at 10%.

Spread of Attainment for Children with SEN

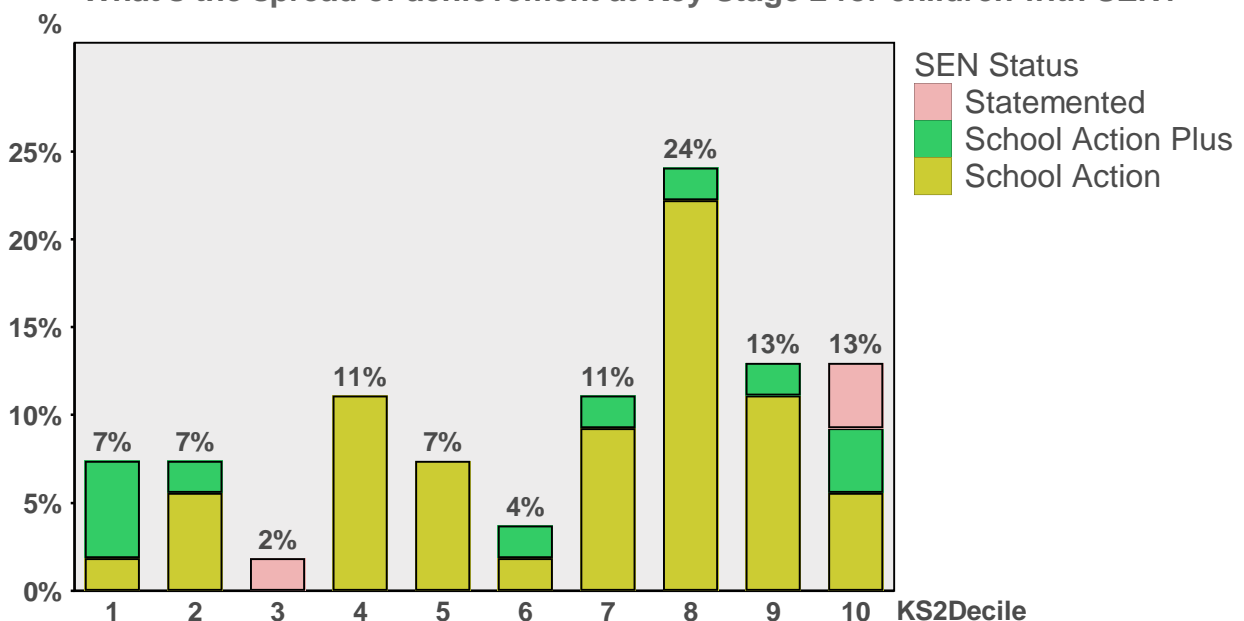


What's the spread of achievement at Key Stage 1 for children with SEN?



This chart highlights children who have been registered as having a Special Educational Need, and shows what their levels of achievement were at Key Stage 1.

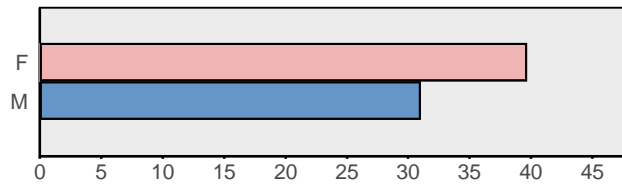
What's the spread of achievement at Key Stage 2 for children with SEN?



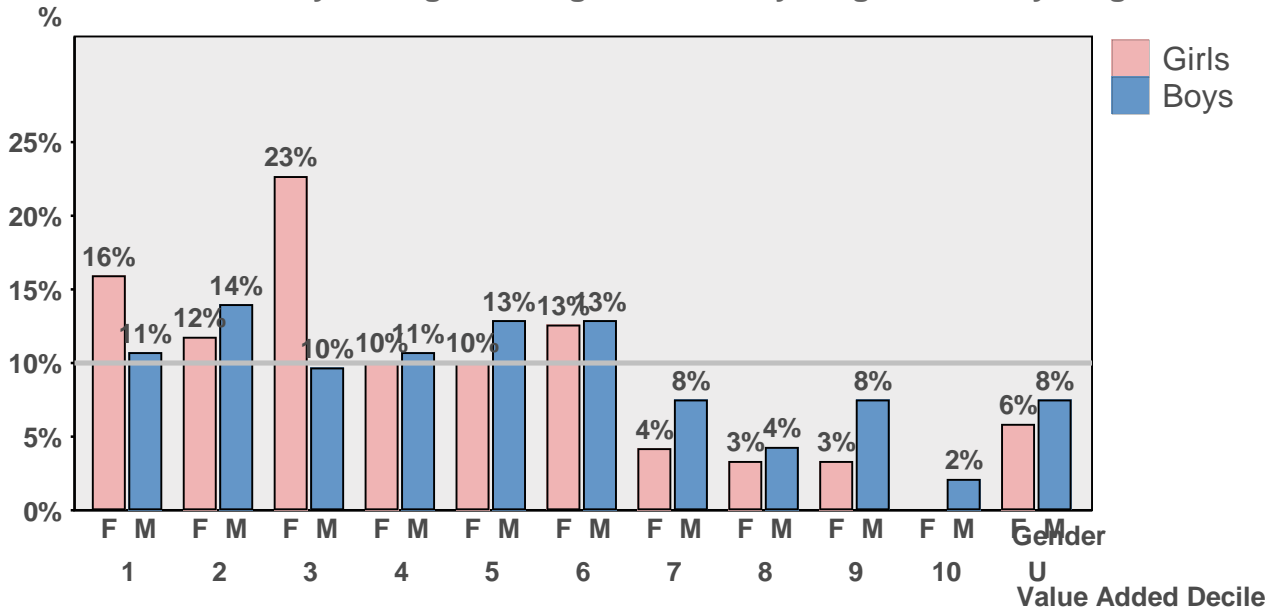
This chart highlights children who have been registered as having a Special Educational Need, and shows what their levels of achievement were at Key Stage 2.

Spread of Value Added Results by Gender and SEN

Average No of Pupils

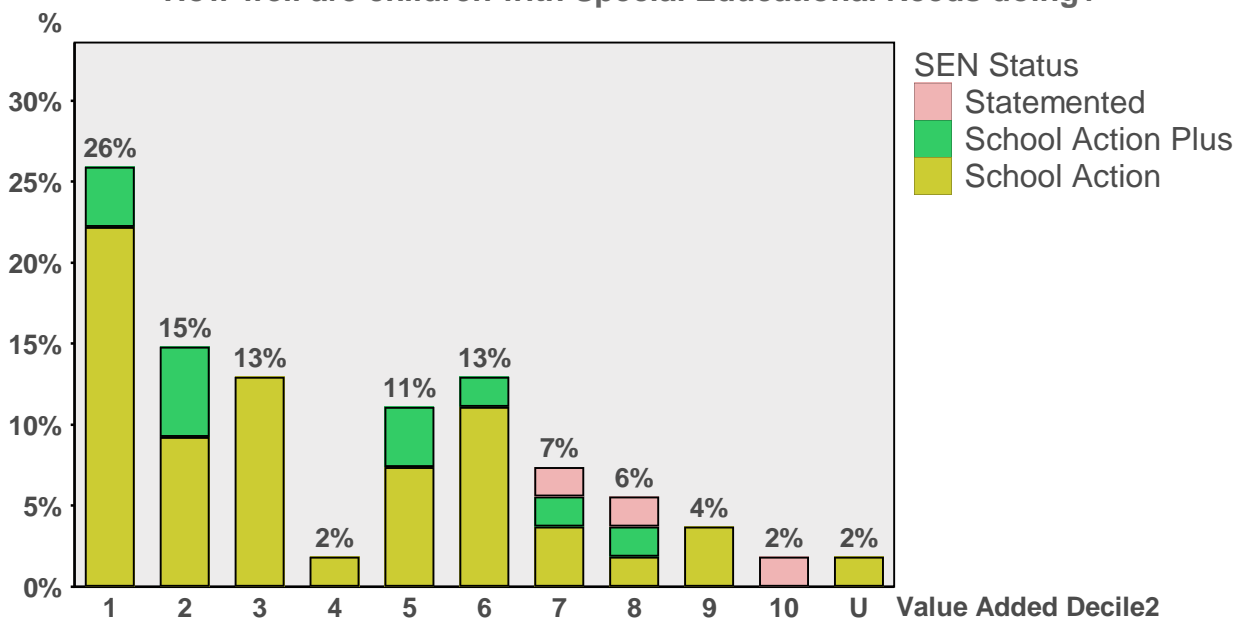


How well are boys and girls doing between Key Stage 1 and Key Stage 2?



The spread of Key Stage 1 to Key Stage 2 value added: the height of the bars represents the percentage of children in each national decile (so the bars labelled '1' show the percentage of children performing as well as the top 10 per cent nationally).

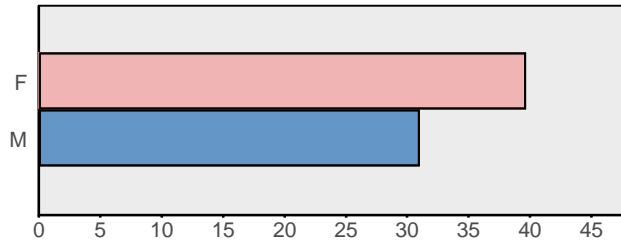
How well are children with Special Educational Needs doing?



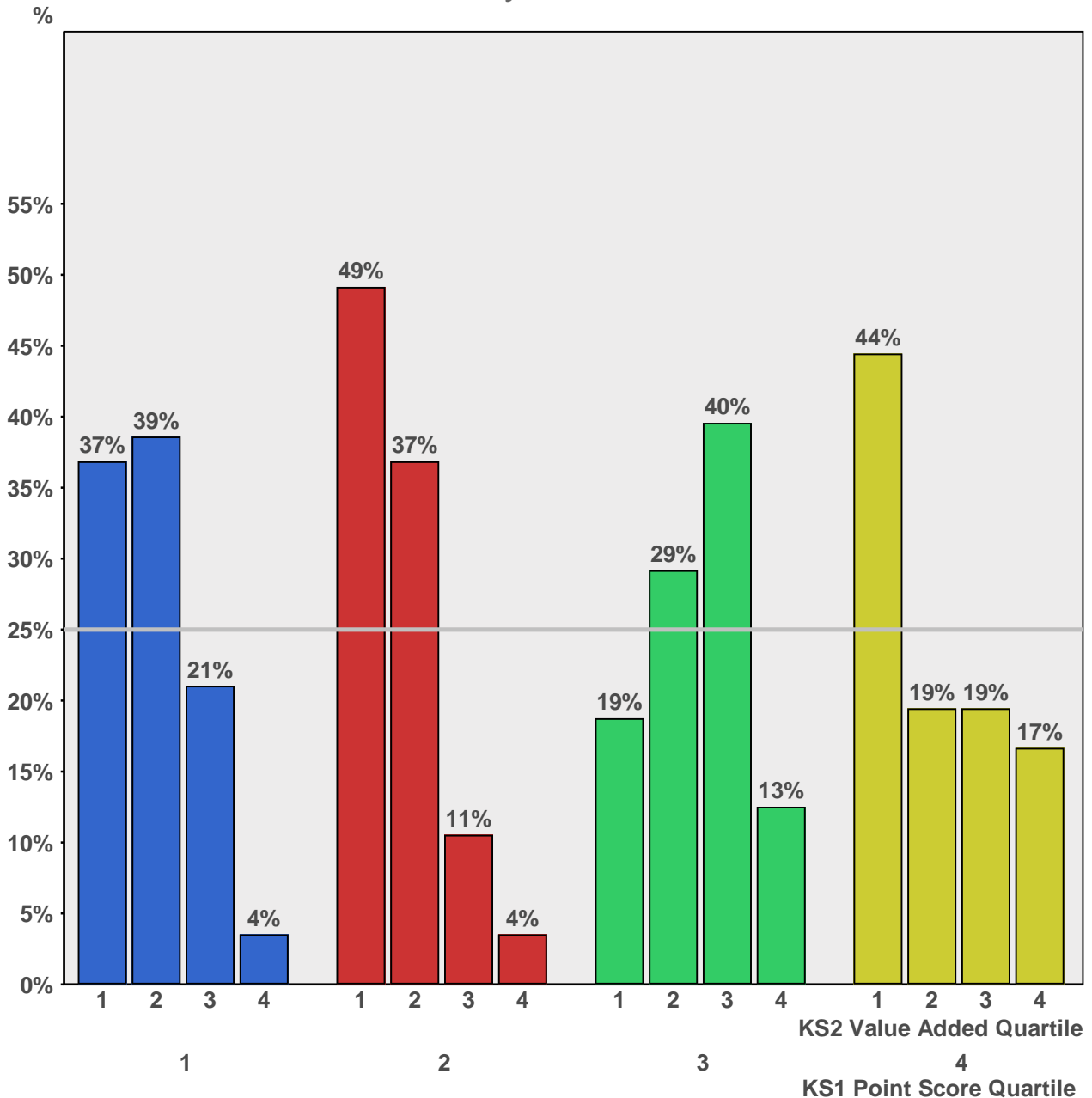
The spread of Key Stage 1 to Key Stage 2 value added for children with Special Educational Needs: the height of the bars represents the percentage of children in each national decile (so the bars labelled '1' show the percentage of children performing as well as the top 10 per cent nationally).

How Value Added Varies with KS1 Achievement

Average No of Pupils



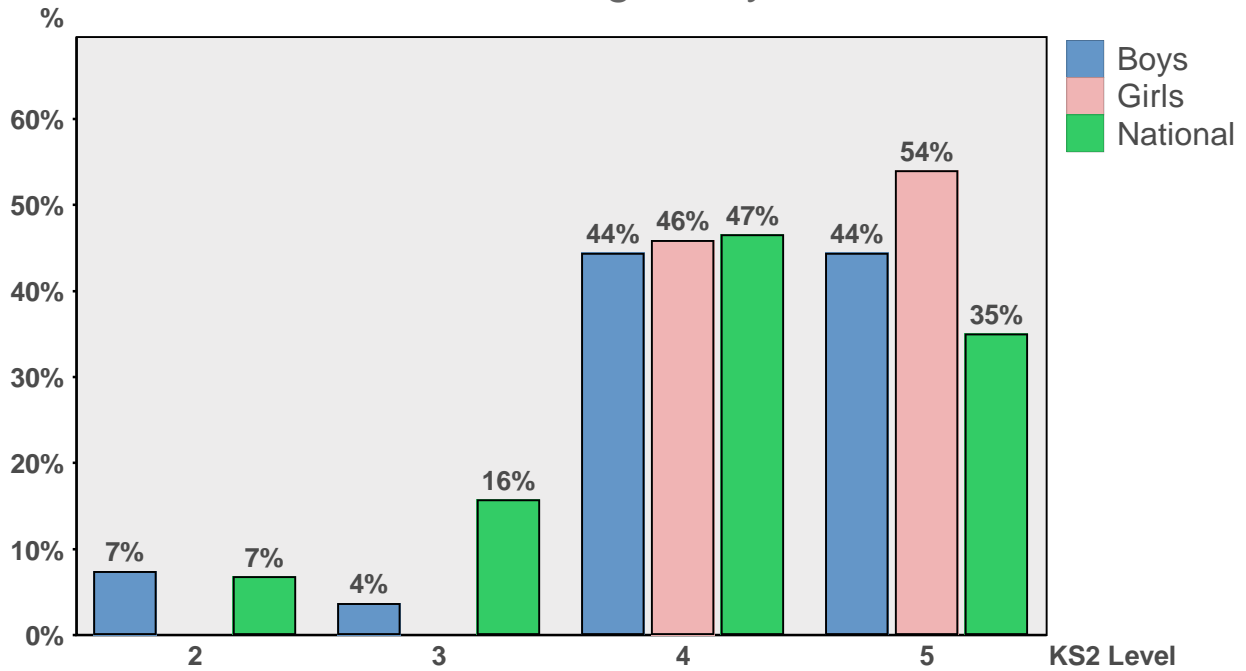
How do children like yours fare in this school?



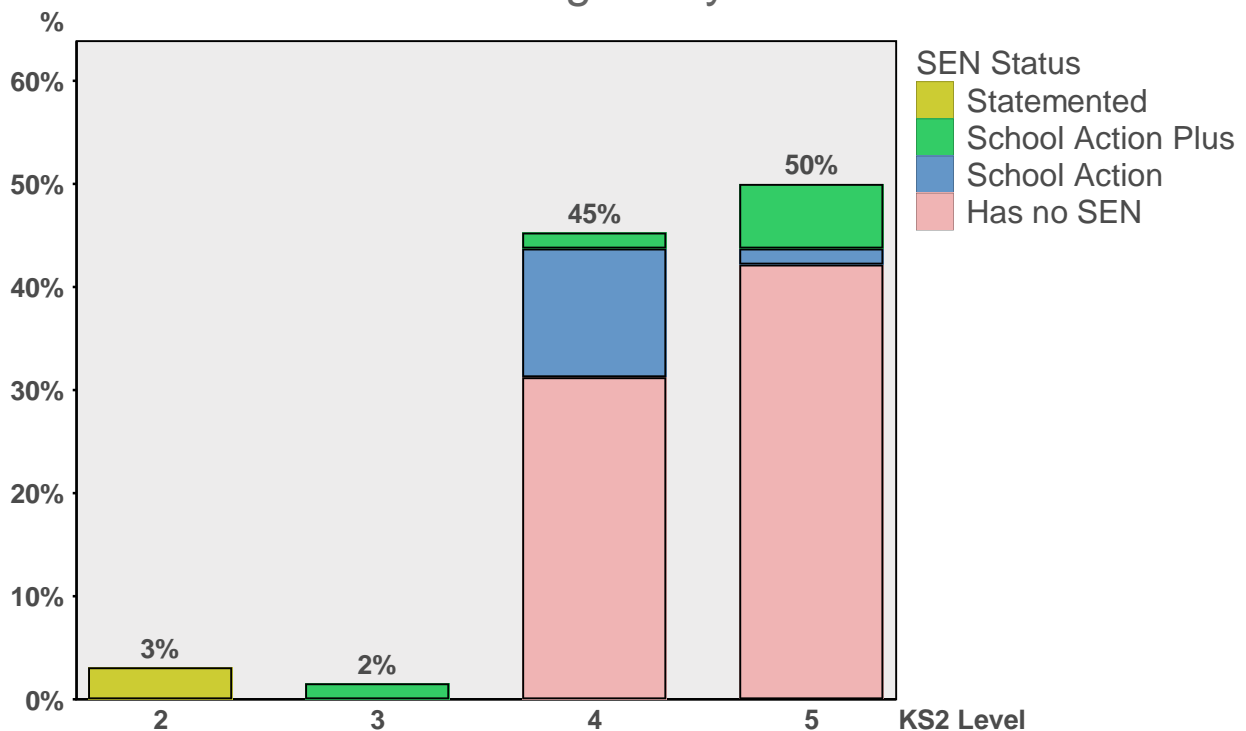
The spread of Key Stage 1 to Key Stage 2 value added scores for each Key Stage 1 quartile. So if your child is a top performer, look at the top KS1 quartile (in blue on the left) and at the proportion appearing in the top two value added quartiles (the two left-hand blue bars). If your child is middle of the road, look similarly at the red and green bars; if he struggles, look at the yellow bars.

How well do children do in English?

Grades in English by Gender

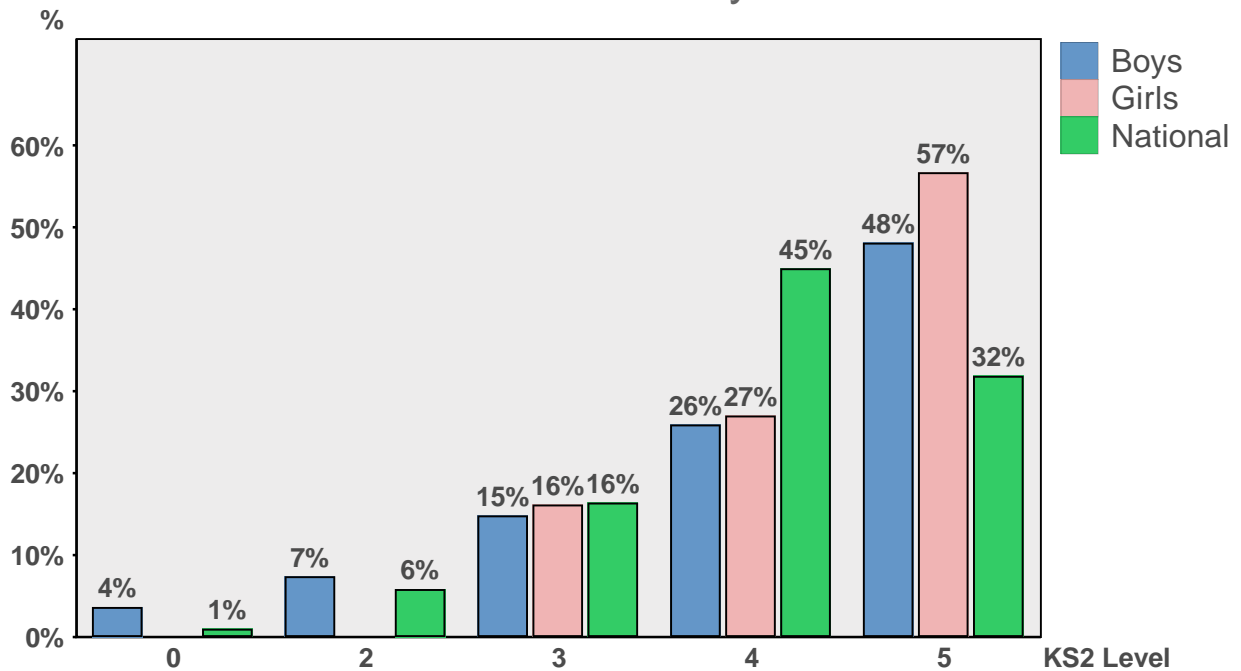


Grades in English by SEN status

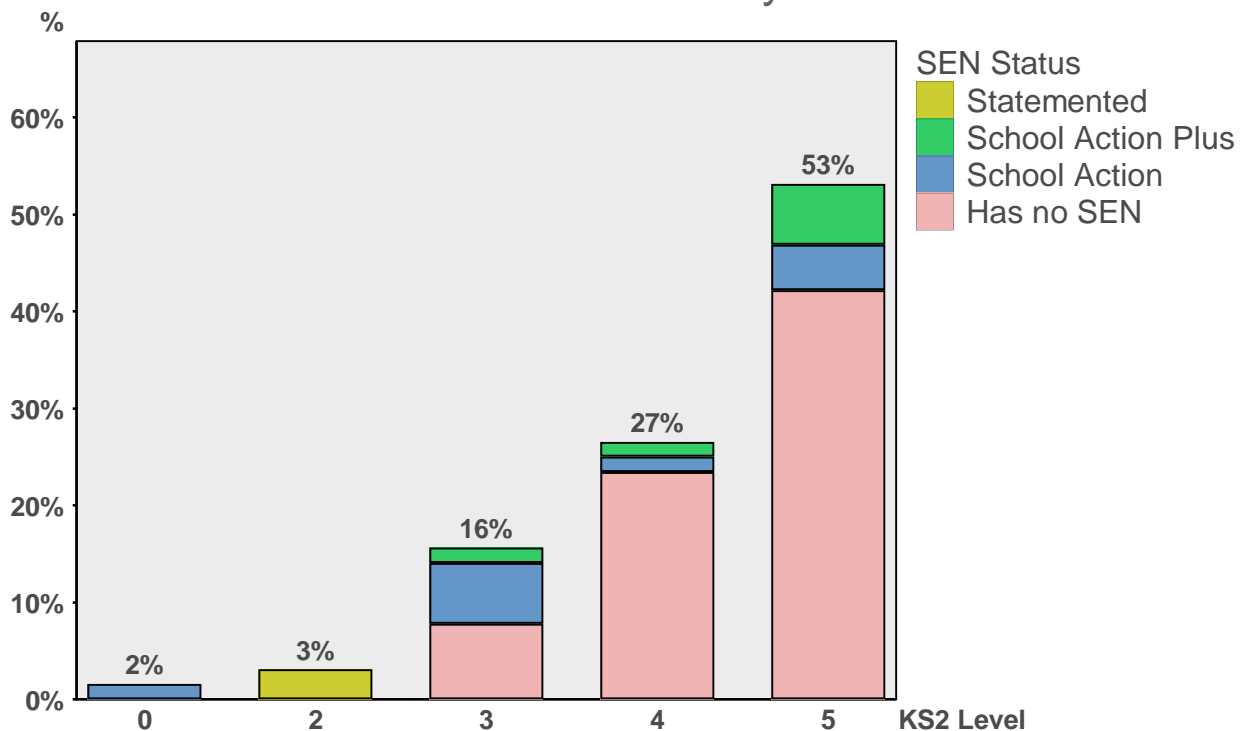


How well do children do in Maths?

Grades in Maths by Gender

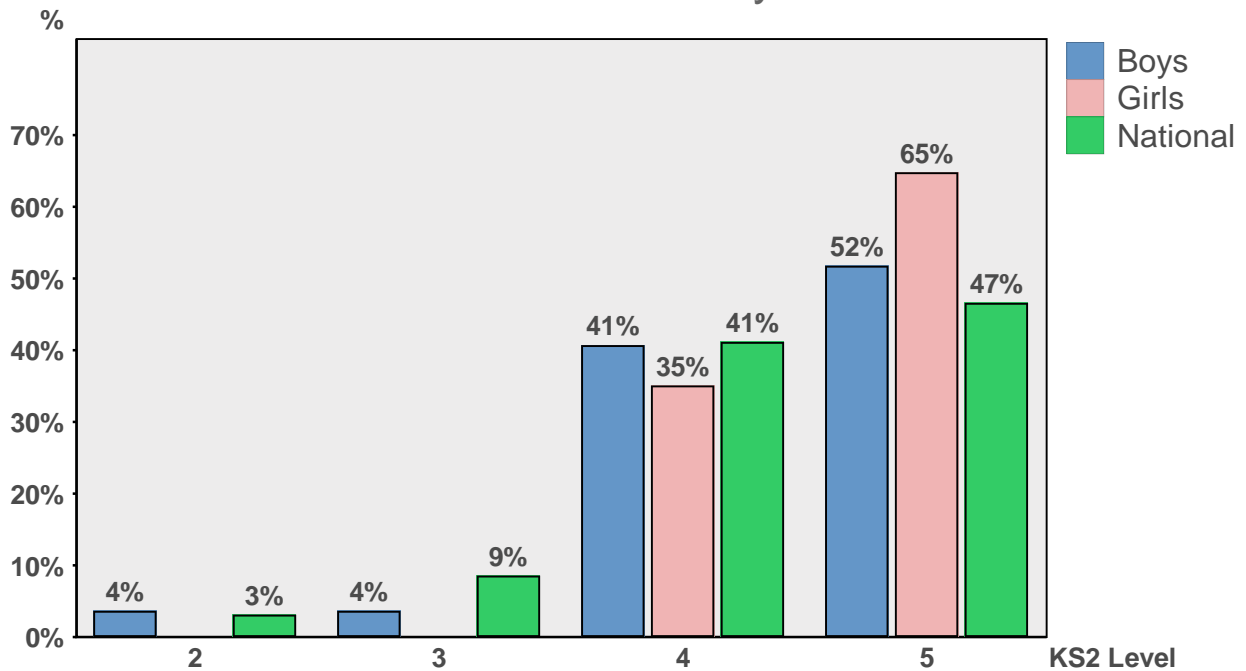


Grades in Maths by SEN

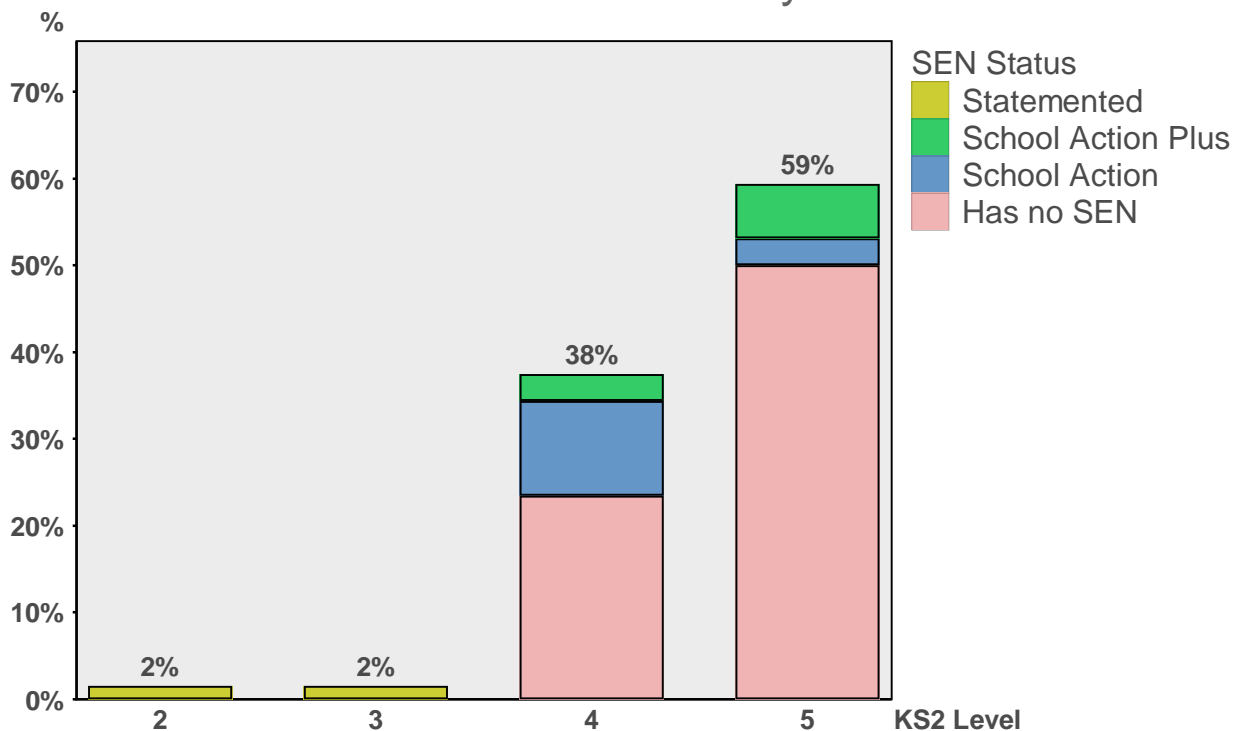


How well do children do in Science?

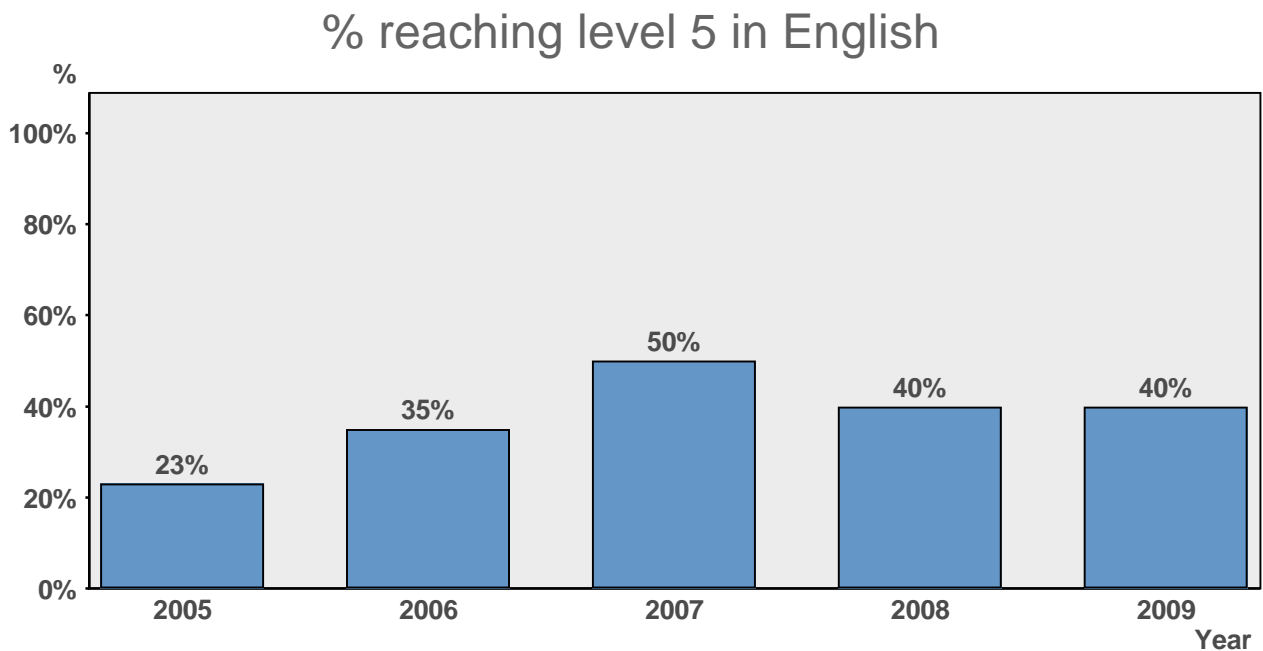
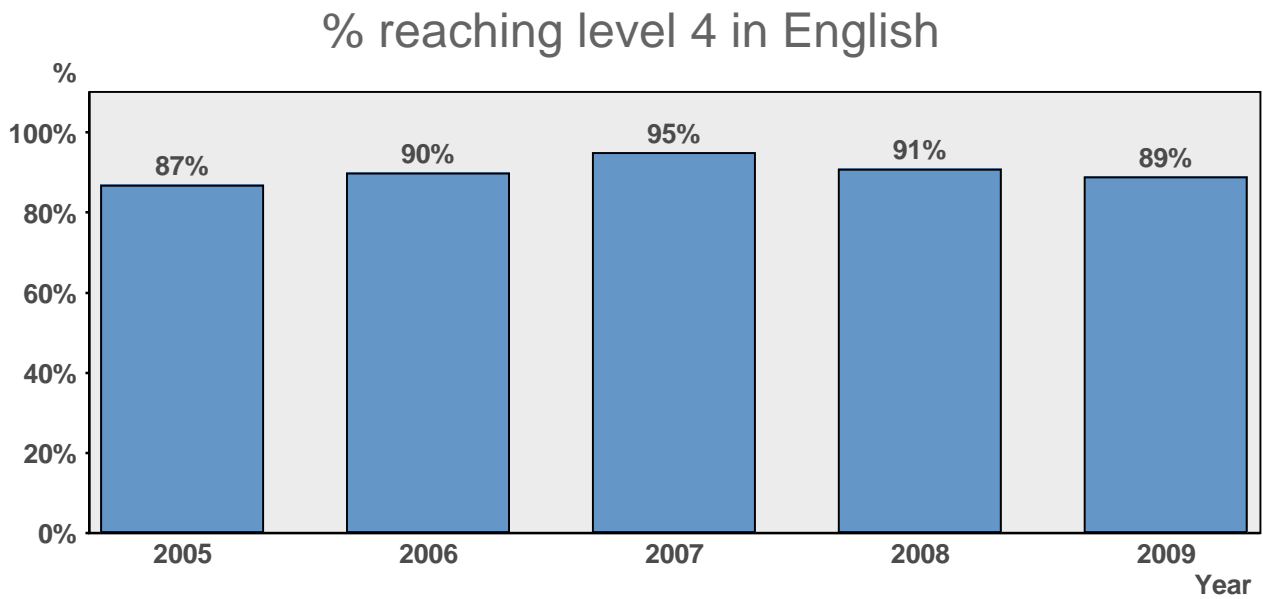
Grades in Science by Gender



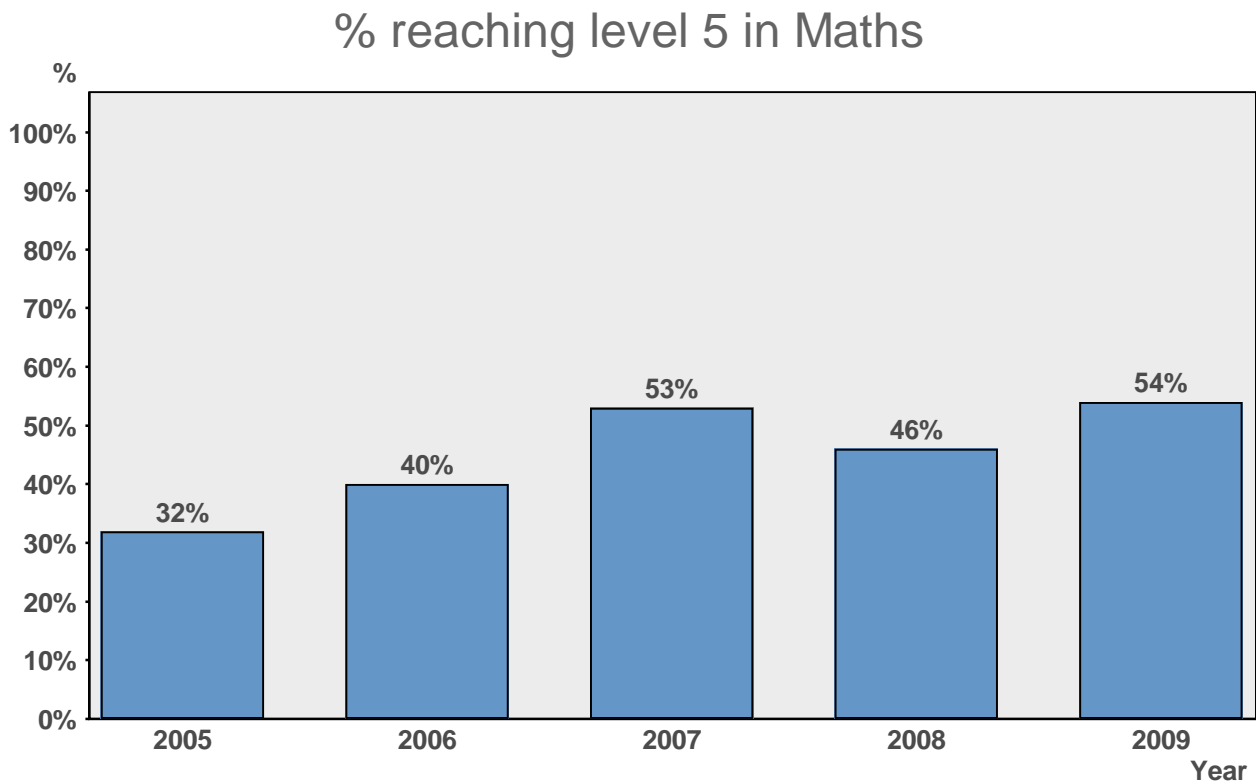
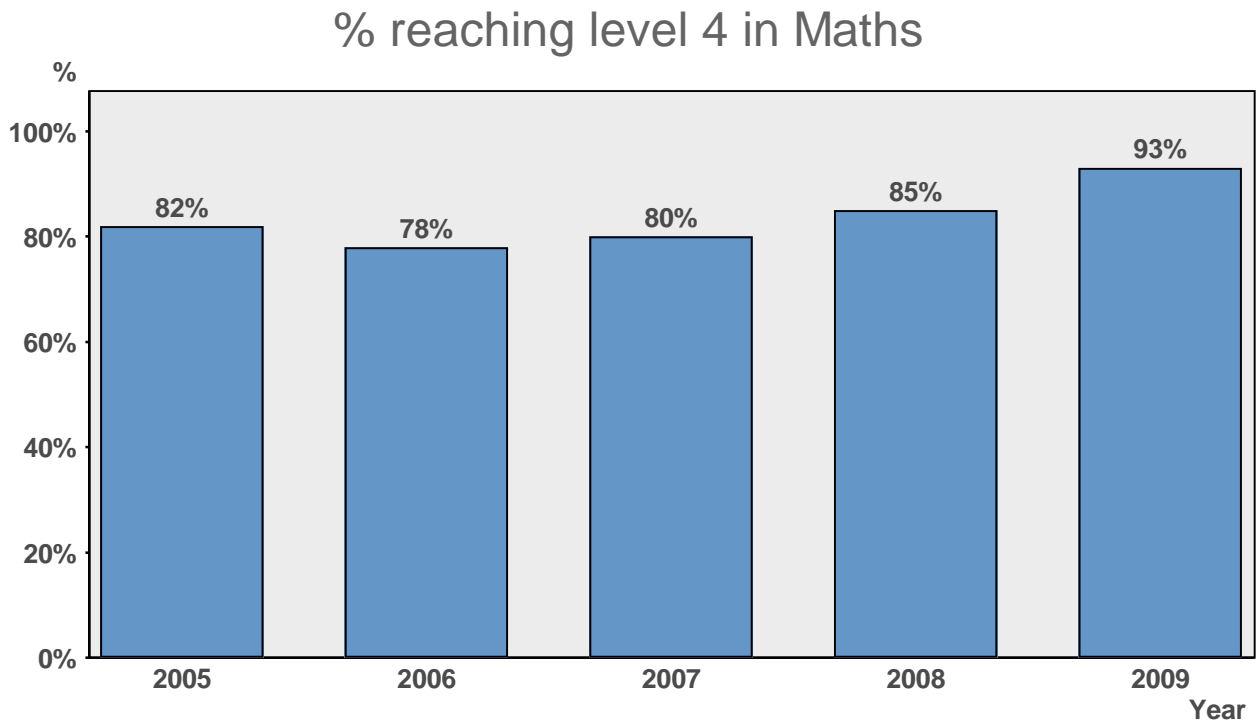
Grades in Science by SEN



Are English results improving?

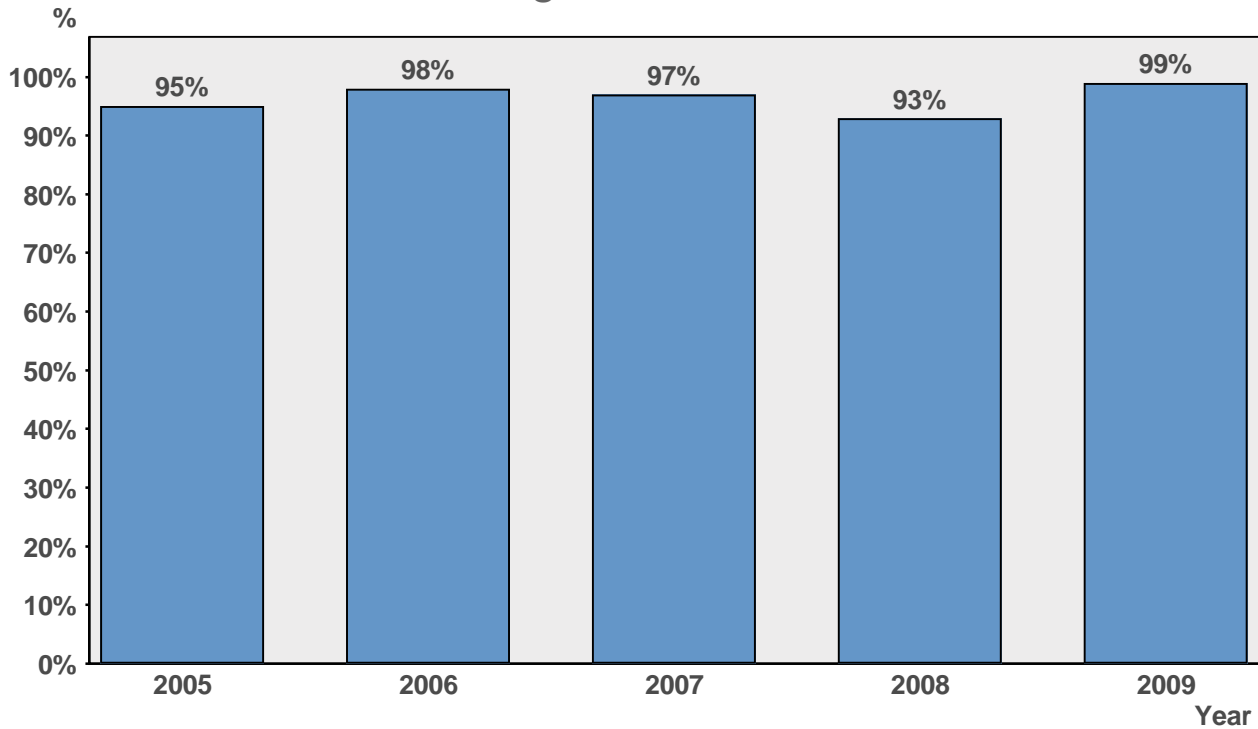


Are Maths results improving?

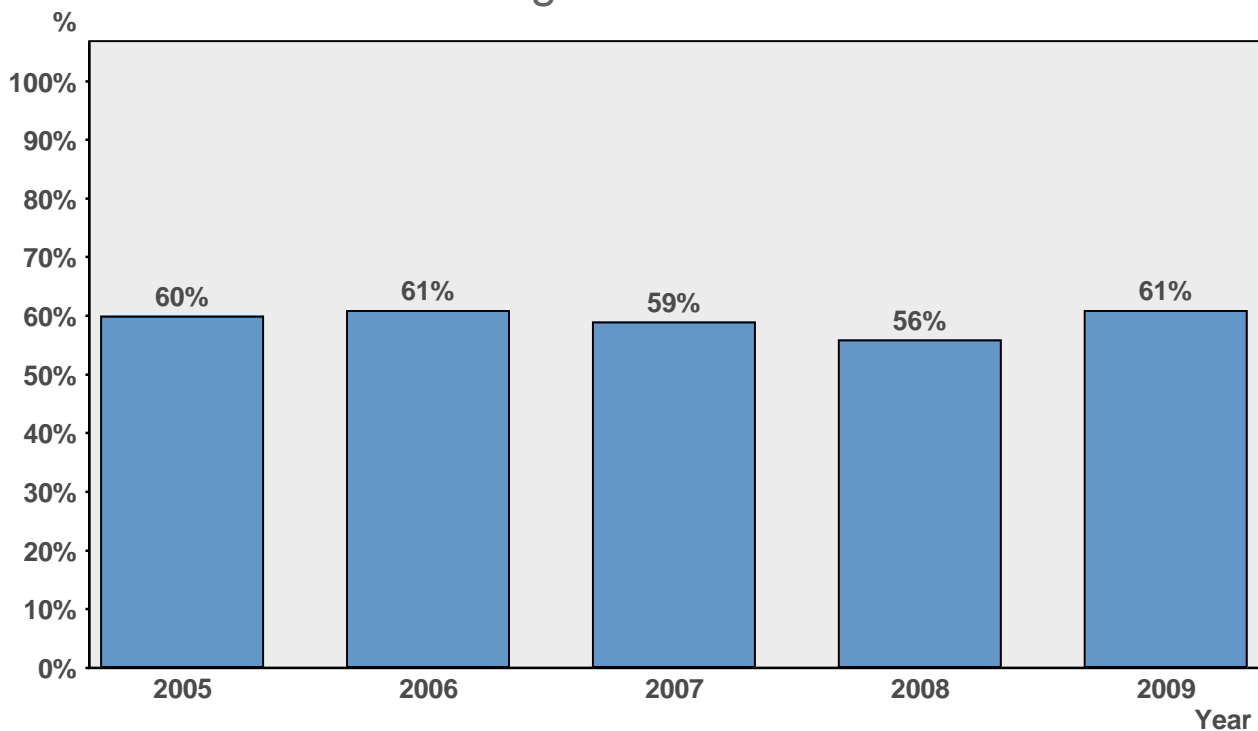


Are Science results improving?

% reaching level 4 in Science

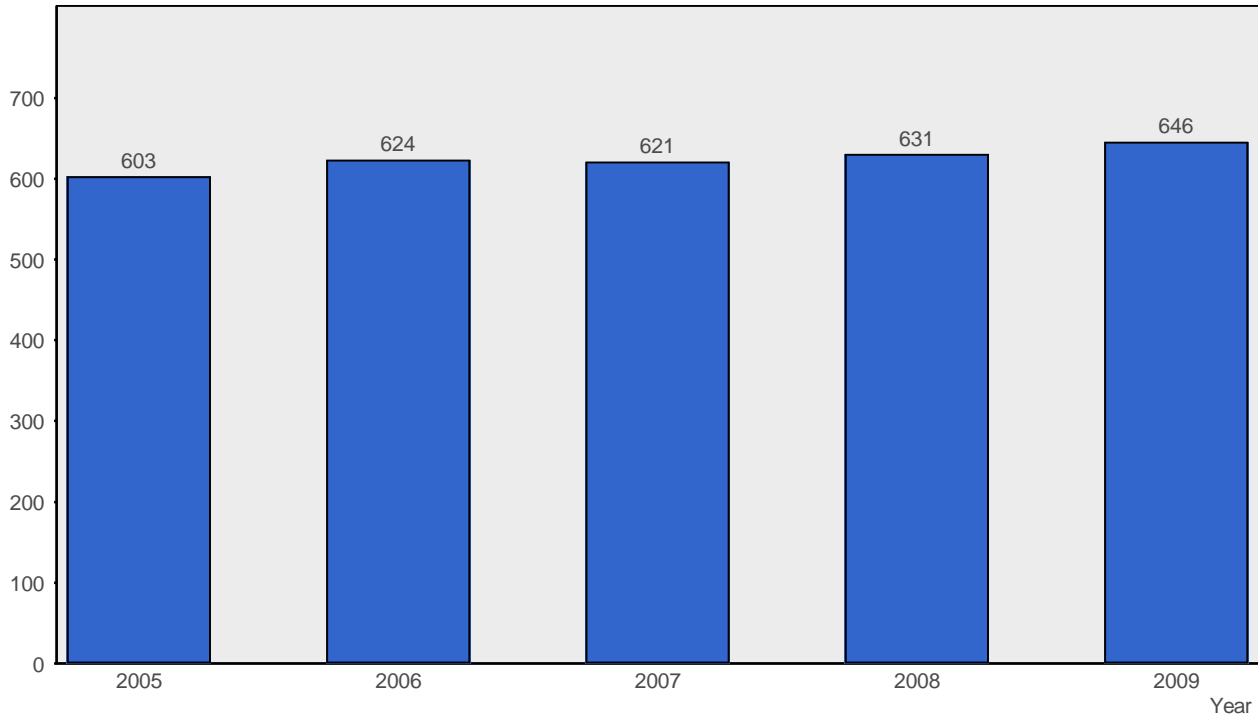


% reaching level 5 in Science



Trends in School Roll

Pupils on Roll - Last 5 Years



Total Pupil Absence Last 5 Years

